

## C8orf44 Antibody

Catalog No: #47281



Orders: order@signalwayantibody.com

Support: tech@signalwayantibody.com

## Description

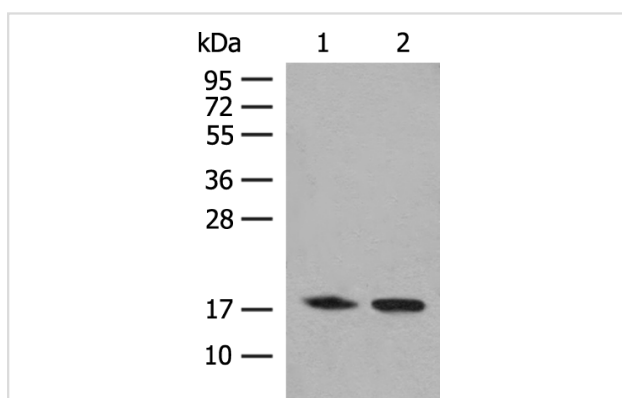
Product Name	C8orf44 Antibody
Host Species	Rabbit
Clonality	Polyclonal
Purification	Antigen affinity purification
Applications	WB, IHC
Species Reactivity	Hu
Specificity	The antibody detects endogenous levels of total C8orf44 protein.
Immunogen Type	Peptide
Immunogen Description	Fusion protein of human C8orf44
Target Name	C8orf44
Accession No.	Swiss-Prot#:Q96CB5NCBI Gene ID:56260Gene Accssion:BC014448
Calculated MW	18 kDa
Concentration	0.6
Formulation	Rabbit IgG in pH7.4 PBS, 0.05% NaN <sub>3</sub> , 40% Glycerol.
Storage	Store at -20°C

## Application Details

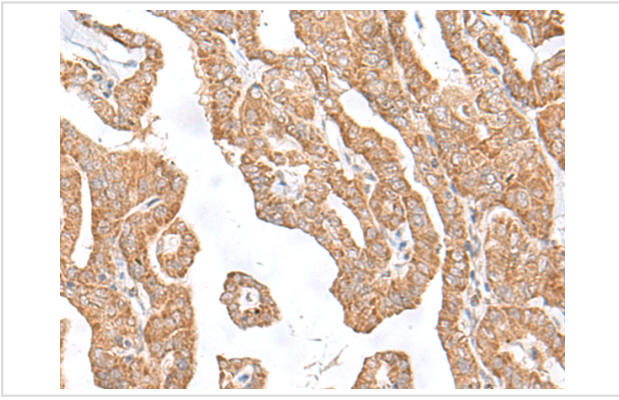
WB dilution:1:200-1000

IHC dilution:1: 40-200

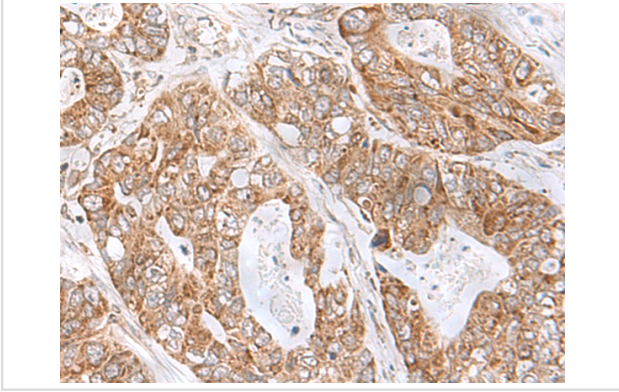
## Images



Gel: 12%SDS-PAGE, Lysate: 40  $\mu$ g, Lane 1-2: K562 cell, Human kidney tissue lysates, Primary antibody:47281(C8orf44 Antibody) at dilution 1/250, Secondary antibody: Goat anti rabbit IgG at 1/8000 dilution, Exposure time: 1 minute



The image is immunohistochemistry of paraffin-embedded Human thyroid cancer tissue using 47281(C8orf44 Antibody) at dilution 1/35. (Original magnification: 200)



The image is immunohistochemistry of paraffin-embedded Human gastric cancer tissue using 47281(C8orf44 Antibody) at dilution 1/35. (Original magnification: 200)

## Background

The function of this protein remains unknown.

Note: This product is for in vitro research use only and is not intended for use in humans or animals.