

CTRB1 Antibody

Catalog No: #47289

Orders: order@signalwayantibody.com

Support: tech@signalwayantibody.com

Description

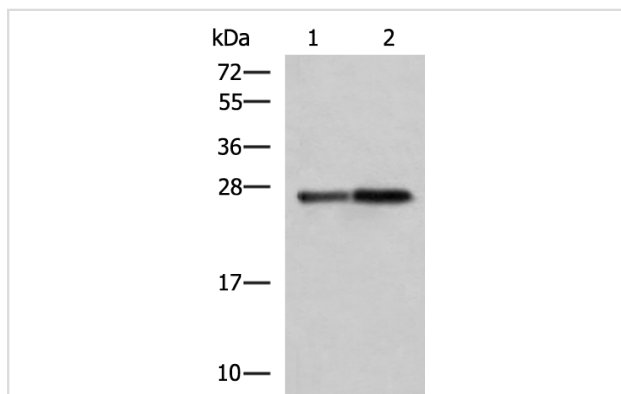
Product Name	CTRB1 Antibody
Host Species	Rabbit
Clonality	Polyclonal
Purification	Antigen affinity purification
Applications	WB, IHC
Species Reactivity	Hu, Ms, Rt
Specificity	The antibody detects endogenous levels of total CTRB1 protein.
Immunogen Type	Peptide
Immunogen Description	Fusion protein of human CTRB1
Target Name	CTRB1
Other Names	CTRB
Accession No.	Swiss-Prot#:P17538NCBI Gene ID:1504Gene Accssion:BC005385
Calculated MW	28 kDa
Concentration	1
Formulation	Rabbit IgG in pH7.4 PBS, 0.05% NaN ₃ , 40% Glycerol.
Storage	Store at -20°C

Application Details

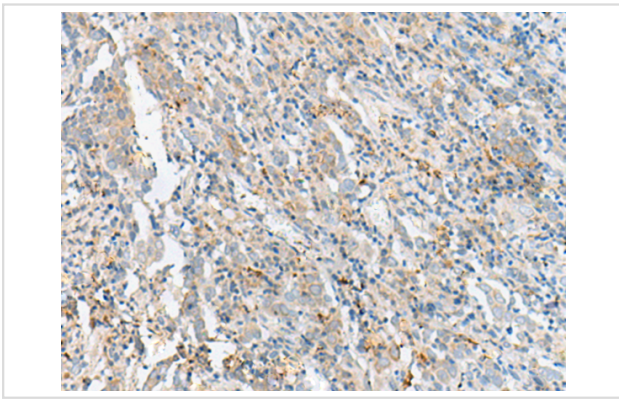
WB dilution:1:1000-5000

IHC dilution:1: 20-100

Images



Gel: 12%SDS-PAGE, Lysate: 40 μ g, Lane 1-2: Mouse pancreas tissue and Rat pancreas tissue lysates, Primary antibody:47289(CTRB1 Antibody) at dilution 1/1000, Secondary antibody: Goat anti rabbit IgG at 1/5000 dilution, Exposure time: 3 seconds



The image is immunohistochemistry of paraffin-embedded Human cervical cancer tissue using 47289(CTRB1 Antibody) at dilution 1/60.(Original magnification: 200)

Background

This gene encodes a member of the serine protease family of enzymes and forms a principal precursor of the pancreatic proteolytic enzymes. The encoded preproprotein is synthesized in the acinar cells of the pancreas and secreted into the small intestine where it undergoes proteolytic activation to generate a functional enzyme. This gene is located adjacent to a related chymotrypsinogen gene. This gene encodes distinct isoforms, some or all of which may undergo similar processing to generate the mature protein.

Note: This product is for in vitro research use only and is not intended for use in humans or animals.