

MCFD2 Antibody

Catalog No: #47337

Orders: order@signalwayantibody.comSupport: tech@signalwayantibody.com

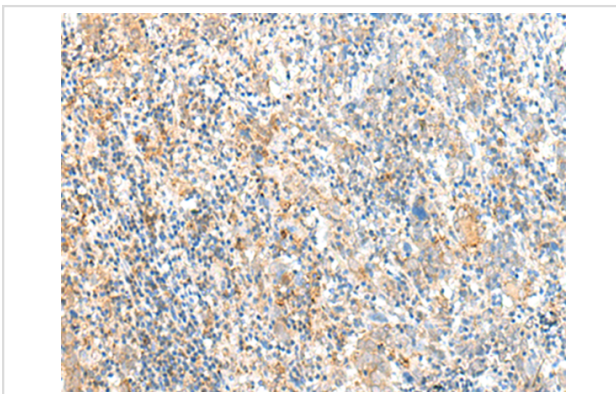
Description

Product Name	MCFD2 Antibody
Host Species	Rabbit
Clonality	Polyclonal
Purification	Antigen affinity purification
Applications	IHC
Species Reactivity	Hu, Ms, Rt
Specificity	The antibody detects endogenous levels of total MCFD2 protein.
Immunogen Type	Peptide
Immunogen Description	Fusion protein of human MCFD2
Target Name	MCFD2
Other Names	F5F8D; SDNSF; F5F8D2; LMAN1IP
Accession No.	Swiss-Prot#:Q8NI22NCBI Gene ID:90411Gene Accssion:BC040357
Concentration	0.7
Formulation	Rabbit IgG in pH7.4 PBS, 0.05% NaN ₃ , 40% Glycerol.
Storage	Store at -20°C

Application Details

IHC dilution:1: 20-100

Images



The image is immunohistochemistry of paraffin-embedded Human cervical cancer tissue using 47337(MCFD2 Antibody) at dilution 1/40.(Original magnification: 200)

Background

This gene encodes a soluble luminal protein with two calmodulin-like EF-hand motifs at its C-terminus. This protein forms a complex with LMAN1 (lectin mannose binding protein 1; also known as ERGIC-53) that facilitates the transport of coagulation factors V (FV) and VIII (FVIII) from the endoplasmic reticulum to the Golgi apparatus via an endoplasmic reticulum Golgi intermediate compartment (ERGIC). Mutations in this gene cause combined deficiency of FV and FVIII (F5F8D); a rare autosomal recessive bleeding disorder characterized by mild to moderate bleeding and coordinate reduction in plasma FV and FVIII levels. This protein has also been shown to maintain stem cell potential in adult central nervous system and is a marker for testicular germ cell tumors. The 3' UTR of this gene contains a transposon-like human repeat element named 'THE 1'. A processed

RNA pseudogene of this gene is on chromosome 6p22.1. Alternative splicing results in multiple transcript variants encoding distinct isoforms.

Note: This product is for in vitro research use only and is not intended for use in humans or animals.