

RHAG Antibody

Catalog No: #47405

Orders: order@signalwayantibody.comSupport: tech@signalwayantibody.com

Description

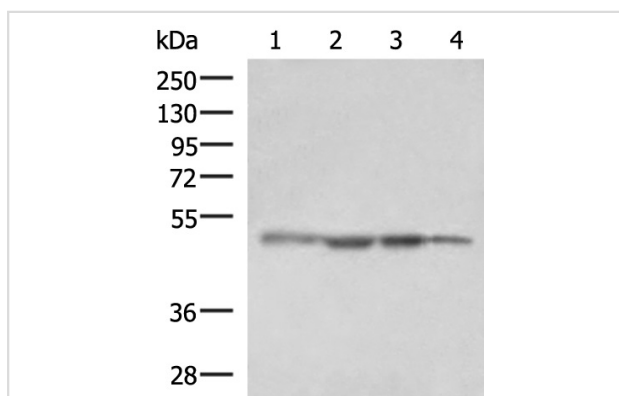
Product Name	RHAG Antibody
Host Species	Rabbit
Clonality	Polyclonal
Purification	Antigen affinity purification
Applications	WB, IHC
Species Reactivity	Hu, Ms
Specificity	The antibody detects endogenous levels of total RHAG protein.
Immunogen Type	Peptide
Immunogen Description	Fusion protein of human RHAG
Target Name	RHAG
Other Names	OHS; RH2; OHST; Rh50; CD241; RH50A; Rh50GP; SLC42A1
Accession No.	Swiss-Prot#:Q02094NCBI Gene ID:6005Gene Accssion:BC012605
Calculated MW	44 kDa
Concentration	2
Formulation	Rabbit IgG in pH7.4 PBS, 0.05% NaN ₃ , 40% Glycerol.
Storage	Store at -20°C

Application Details

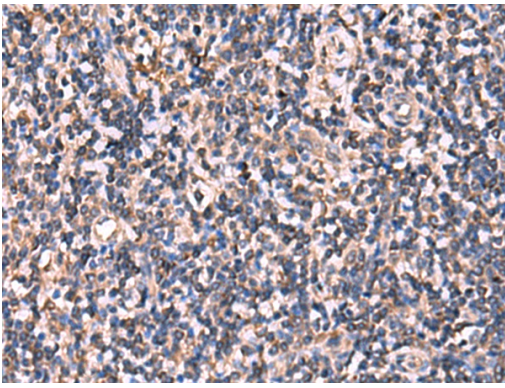
WB dilution:1:1000-5000

IHC dilution:1: 50-300

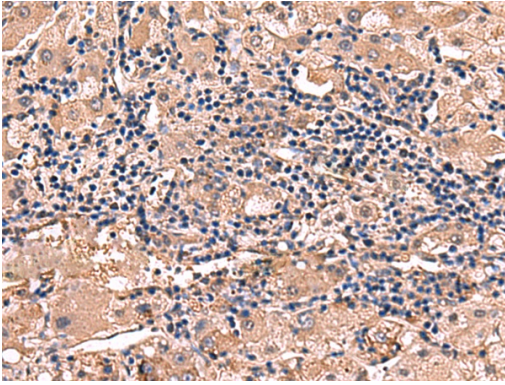
Images



Gel: 8%SDS-PAGE, Lysate: 40 μ g, Lane 1-4: HepG2 cell, Human fetal liver tissue, K562 cell, NIH/3T3 cell lysates, Primary antibody:47405(RHAG Antibody) at dilution 1/1600, Secondary antibody: Goat anti rabbit IgG at 1/5000 dilution, Exposure time: 30 seconds



The image is immunohistochemistry of paraffin-embedded Human tonsil tissue using 47405(RHAG Antibody) at dilution 1/110.(Original magnification: 200)



The image is immunohistochemistry of paraffin-embedded Human liver cancer tissue using 47405(RHAG Antibody) at dilution 1/110.(Original magnification: 200)

Background

The protein encoded by this gene is erythrocyte-specific and is thought to be part of a membrane channel that transports ammonium and carbon dioxide across the blood cell membrane. The encoded protein appears to interact with Rh blood group antigens and Rh30 polypeptides. Defects in this gene are a cause of regulator type Rh-null hemolytic anemia (RHN), or Rh-deficiency syndrome.

Note: This product is for in vitro research use only and is not intended for use in humans or animals.