

RIC8A Antibody

Catalog No: #47407

Orders: order@signalwayantibody.comSupport: tech@signalwayantibody.com

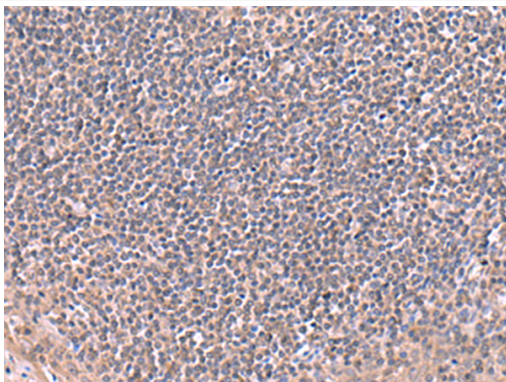
Description

Product Name	RIC8A Antibody
Host Species	Rabbit
Clonality	Polyclonal
Purification	Antigen affinity purification
Applications	IHC
Species Reactivity	Hu, Ms, Rt
Specificity	The antibody detects endogenous levels of total RIC8A protein.
Immunogen Type	Peptide
Immunogen Description	Fusion protein of human RIC8A
Target Name	RIC8A
Other Names	RIC8
Accession No.	Swiss-Prot#:Q9NPQ8NCBI Gene ID:60626Gene Accssion:BC011821
Concentration	1.4
Formulation	Rabbit IgG in pH7.4 PBS, 0.05% NaN ₃ , 40% Glycerol.
Storage	Store at -20°C

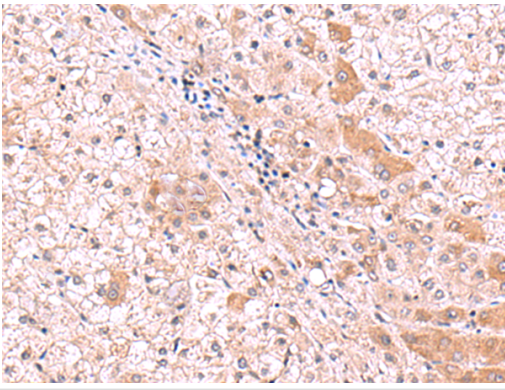
Application Details

IHC dilution:1: 50-300

Images



The image is immunohistochemistry of paraffin-embedded Human tonsil tissue using 47407(RIC8A Antibody) at dilution 1/80.(Original magnification: 200)



The image is immunohistochemistry of paraffin-embedded Human liver cancer tissue using 47407(RIC8A Antibody) at dilution 1/80.(Original magnification: 200)

Background

Guanine nucleotide exchange factor (GEF), which can activate some, but not all, G-alpha proteins. Able to activate GNAI1, GNAO1 and GNAQ, but not GNAS by exchanging bound GDP for free GTP. Involved in regulation of microtubule pulling forces during mitotic movement of chromosomes by stimulating G(i)-alpha protein, possibly leading to release G(i)-alpha-GTP and NuMA proteins from the NuMA-GPSM2-G(i)-alpha-GDP complex (By similarity). Also acts as an activator for G(q)-alpha (GNAQ) protein by enhancing the G(q)-coupled receptor-mediated ERK activation.

Note: This product is for in vitro research use only and is not intended for use in humans or animals.