

TUBB2A Antibody

Catalog No: #47409

Orders: order@signalwayantibody.comSupport: tech@signalwayantibody.com

Description

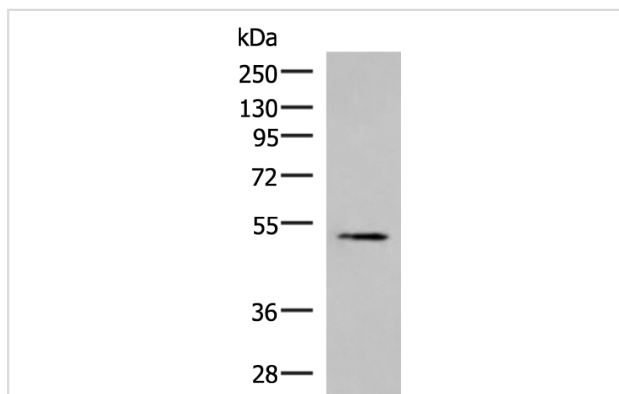
Product Name	TUBB2A Antibody
Host Species	Rabbit
Clonality	Polyclonal
Purification	Antigen affinity purification
Applications	WB, IHC
Species Reactivity	Hu, Ms, Rt
Specificity	The antibody detects endogenous levels of total TUBB2A protein.
Immunogen Type	Peptide
Immunogen Description	Fusion protein of human TUBB2A
Target Name	TUBB2A
Other Names	TUBB; TUBB2; CDCBM5
Accession No.	Swiss-Prot#:Q13885NCBI Gene ID:7280Gene Accssion:BC001194
Calculated MW	50 kDa
Concentration	1.2
Formulation	Rabbit IgG in pH7.4 PBS, 0.05% NaN ₃ , 40% Glycerol.
Storage	Store at -20°C

Application Details

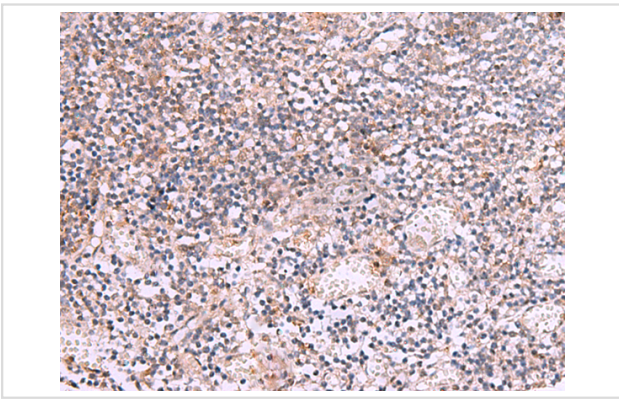
WB dilution: 1:500-2000

IHC dilution: 1: 50-300

Images



Gel: 8%SDS-PAGE, Lysate: 40 μ g, Lane: 293T cell lysate,
Primary antibody: 47409(TUBB2A Antibody) at dilution 1/550,
Secondary antibody: Goat anti rabbit IgG at 1/5000 dilution,
Exposure time: 3 seconds



The image is immunohistochemistry of paraffin-embedded Human tonsil tissue using 47409(TUBB2A Antibody) at dilution 1/70.(Original magnification: 200)

Background

Microtubules, key participants in processes such as mitosis and intracellular transport, are composed of heterodimers of alpha- and beta-tubulins. The protein encoded by this gene is a beta-tubulin. Defects in this gene are associated with complex cortical dysplasia with other brain malformations-5. Two transcript variants encoding distinct isoforms have been found for this gene.?

Note: This product is for in vitro research use only and is not intended for use in humans or animals.