

## DPY19L3 Antibody

Catalog No: #47426

Orders: [order@signalwayantibody.com](mailto:order@signalwayantibody.com)Support: [tech@signalwayantibody.com](mailto:tech@signalwayantibody.com)

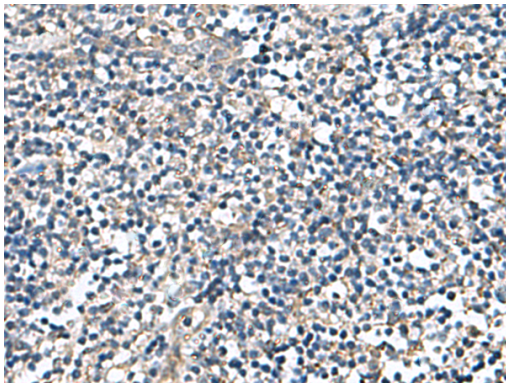
## Description

Product Name	DPY19L3 Antibody
Host Species	Rabbit
Clonality	Polyclonal
Purification	Antigen affinity purification
Applications	IHC
Species Reactivity	Hu
Specificity	The antibody detects endogenous levels of total DPY19L3 protein.
Immunogen Type	Peptide
Immunogen Description	Fusion protein of human DPY19L3
Target Name	DPY19L3
Accession No.	Swiss-Prot#:Q6ZPD9NCBI Gene ID:147991Gene Accssion:BC029162
Concentration	1
Formulation	Rabbit IgG in pH7.4 PBS, 0.05% NaN <sub>3</sub> , 40% Glycerol.
Storage	Store at -20°C

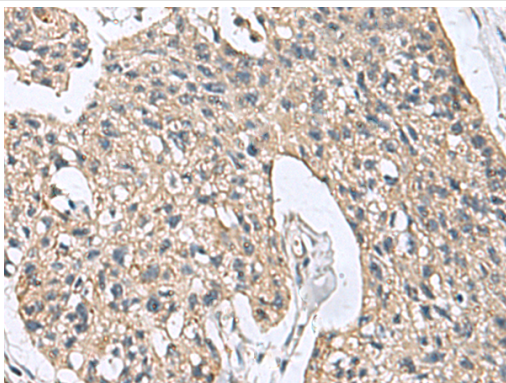
## Application Details

IHC dilution:1: 100-300

## Images



The image is immunohistochemistry of paraffin-embedded Human tonsil tissue using 47426(DPY19L3 Antibody) at dilution 1/110.(Original magnification: 200)



The image is immunohistochemistry of paraffin-embedded Human esophagus cancer tissue using 47426(DPY19L3 Antibody) at dilution 1/110.(Original magnification: 200)

## Background

---

Probable C-mannosyltransferase that mediates C-mannosylation of tryptophan residues on target proteins.

---

Note: This product is for in vitro research use only and is not intended for use in humans or animals.