

RHBDL2 Antibody

Catalog No: #47430

Orders: order@signalwayantibody.comSupport: tech@signalwayantibody.com

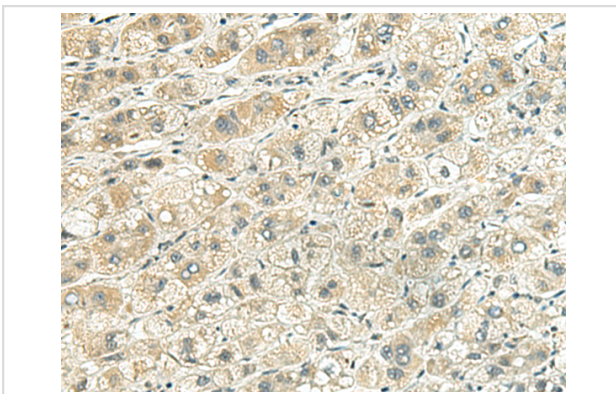
Description

Product Name	RHBDL2 Antibody
Host Species	Rabbit
Clonality	Polyclonal
Purification	Antigen affinity purification
Applications	IHC
Species Reactivity	Hu
Specificity	The antibody detects endogenous levels of total RHBDL2 protein.
Immunogen Type	Peptide
Immunogen Description	Fusion protein of human RHBDL2
Target Name	RHBDL2
Other Names	RRP2
Accession No.	Swiss-Prot#:Q9NX52NCBI Gene ID:54933Gene Accssion:BC013103
Concentration	1.2
Formulation	Rabbit IgG in pH7.4 PBS, 0.05% NaN ₃ , 40% Glycerol.
Storage	Store at -20°C

Application Details

IHC dilution:1: 100-300

Images



The image is immunohistochemistry of paraffin-embedded Human liver cancer tissue using 47430(RHBDL2 Antibody) at dilution 1/140.(Original magnification: 200)

Background

The protein encoded by this gene is a member of the rhomboid family of integral membrane proteins. This family contains proteins that are related to *Drosophila* rhomboid protein. Members of this family are found in both prokaryotes and eukaryotes and are thought to function as intramembrane serine proteases. The encoded protein is thought to release soluble growth factors by proteolytic cleavage of certain membrane-bound substrates, including ephrin B2 and ephrin B3. Two transcript variants encoding different isoforms have been found for this gene.

Note: This product is for in vitro research use only and is not intended for use in humans or animals.