

RPS16 Antibody

Catalog No: #47438

Orders: order@signalwayantibody.comSupport: tech@signalwayantibody.com

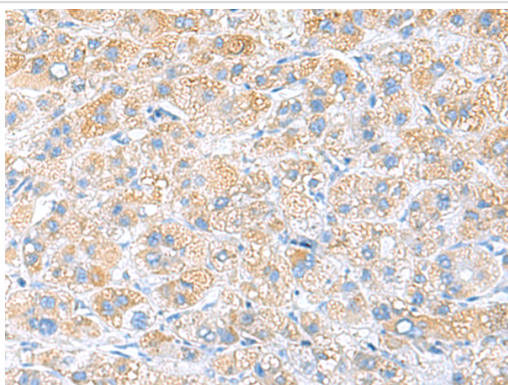
Description

Product Name	RPS16 Antibody
Host Species	Rabbit
Clonality	Polyclonal
Purification	Antigen affinity purification
Applications	IHC
Species Reactivity	Hu, Ms, Rt
Specificity	The antibody detects endogenous levels of total RPS16 protein.
Immunogen Type	Peptide
Immunogen Description	Fusion protein of human RPS16
Target Name	RPS16
Other Names	S16
Accession No.	Swiss-Prot#:P62249NCBI Gene ID:6217Gene Accssion:BC007977
Concentration	1.1
Formulation	Rabbit IgG in pH7.4 PBS, 0.05% NaN ₃ , 40% Glycerol.
Storage	Store at -20°C

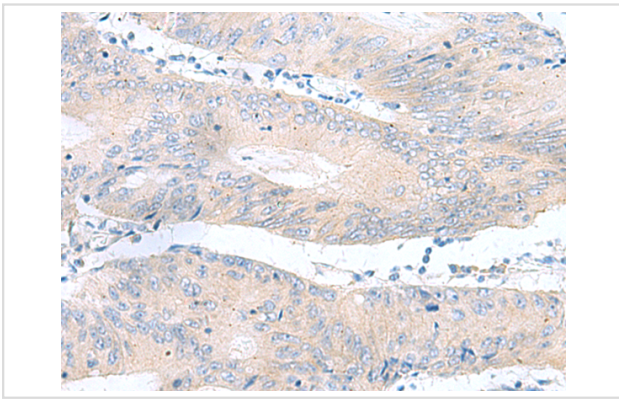
Application Details

IHC dilution:1: 50-200

Images



The image is immunohistochemistry of paraffin-embedded Human liver cancer tissue using 47438(RPS16 Antibody) at dilution 1/65.(Original magnification: 200)



The image is immunohistochemistry of paraffin-embedded Human colorectal cancer tissue using 47438(RPS16 Antibody) at dilution 1/65.(Original magnification: 200)

Background

Ribosomes, the organelles that catalyze protein synthesis, consist of a small 40S subunit and a large 60S subunit. Together these subunits are composed of 4 RNA species and approximately 80 structurally distinct proteins. This gene encodes a ribosomal protein that is a component of the 40S subunit. The protein belongs to the S9P family of ribosomal proteins. It is located in the cytoplasm. As is typical for genes encoding ribosomal proteins, there are multiple processed pseudogenes of this gene dispersed through the genome.

Note: This product is for in vitro research use only and is not intended for use in humans or animals.