

ZG16 Antibody

Catalog No: #47443

Orders: order@signalwayantibody.comSupport: tech@signalwayantibody.com

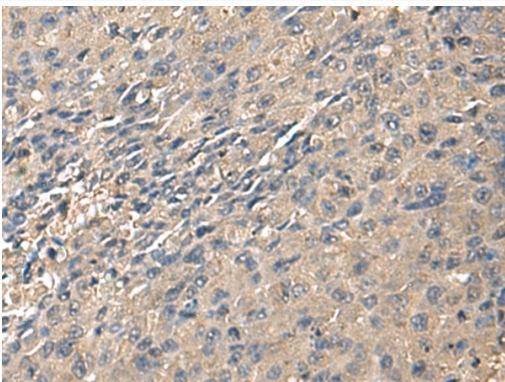
Description

Product Name	ZG16 Antibody
Host Species	Rabbit
Clonality	Polyclonal
Purification	Antigen affinity purification
Applications	IHC
Species Reactivity	Hu, Ms
Specificity	The antibody detects endogenous levels of total ZG16 protein.
Immunogen Type	Peptide
Immunogen Description	Fusion protein of human ZG16
Target Name	ZG16
Other Names	JCLN; JCLN1; ZG16A
Accession No.	Swiss-Prot#:O60844NCBI Gene ID:653808Gene Accssion:BC029149
Concentration	1.7
Formulation	Rabbit IgG in pH7.4 PBS, 0.05% NaN ₃ , 40% Glycerol.
Storage	Store at -20°C

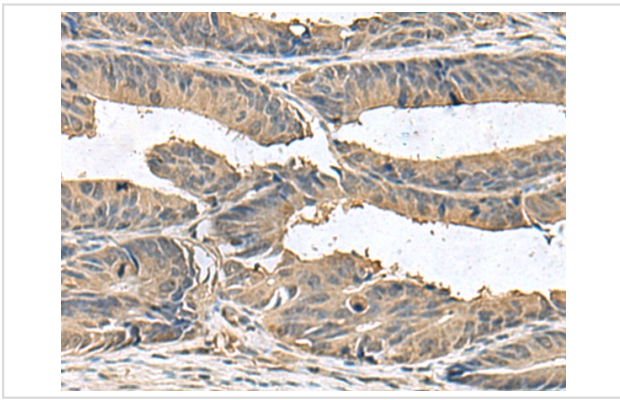
Application Details

IHC dilution:1: 100-300

Images



The image is immunohistochemistry of paraffin-embedded Human liver cancer tissue using 47443(ZG16 Antibody) at dilution 1/95.(Original magnification: 200)



The image is immunohistochemistry of paraffin-embedded Human colorectal cancer tissue using 47443(ZG16 Antibody) at dilution 1/95.(Original magnification: 200)

Background

May play a role in protein trafficking. May act as a linker molecule between the submembranous matrix on the luminal side of zymogen granule membrane (ZGM) and aggregated secretory proteins during granule formation in the TGN.

Note: This product is for in vitro research use only and is not intended for use in humans or animals.