

## RNF208 Antibody

Catalog No: #47451

Orders: [order@signalwayantibody.com](mailto:order@signalwayantibody.com)Support: [tech@signalwayantibody.com](mailto:tech@signalwayantibody.com)

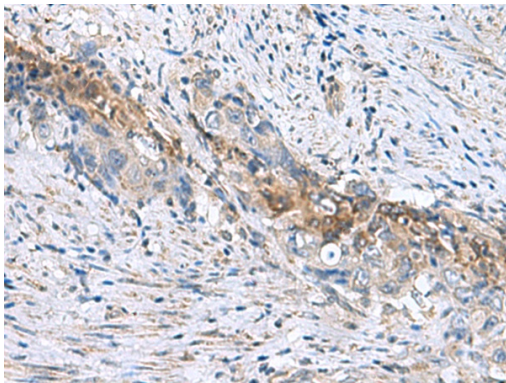
## Description

Product Name	RNF208 Antibody
Host Species	Rabbit
Clonality	Polyclonal
Purification	Antigen affinity purification
Applications	IHC
Species Reactivity	Hu, Ms
Specificity	The antibody detects endogenous levels of total RNF208 protein.
Immunogen Type	Peptide
Immunogen Description	Fusion protein of human RNF208
Target Name	RNF208
Accession No.	Swiss-Prot#:Q9H0X6NCBI Gene ID:727800Gene Accssion:BC016958
Concentration	1
Formulation	Rabbit IgG in pH7.4 PBS, 0.05% NaN <sub>3</sub> , 40% Glycerol.
Storage	Store at -20°C

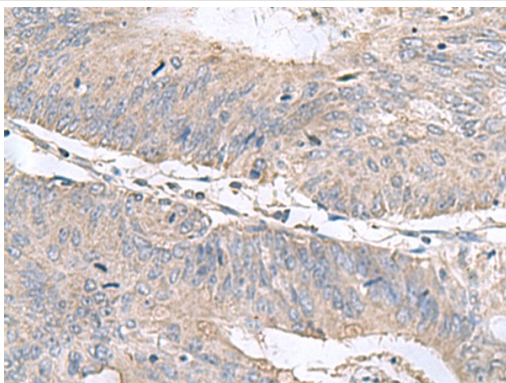
## Application Details

IHC dilution:1: 50-100

## Images



The image is immunohistochemistry of paraffin-embedded Human cervical cancer tissue using 47451(RNF208 Antibody) at dilution 1/55.(Original magnification: 200)



The image is immunohistochemistry of paraffin-embedded Human colorectal cancer tissue using 47451(RNF208 Antibody) at dilution 1/55.(Original magnification: 200)

## Background

---

The function of this protein remains unknown.

---

Note: This product is for in vitro research use only and is not intended for use in humans or animals.