

VGLL1 Antibody

Catalog No: #47455

Orders: order@signalwayantibody.comSupport: tech@signalwayantibody.com

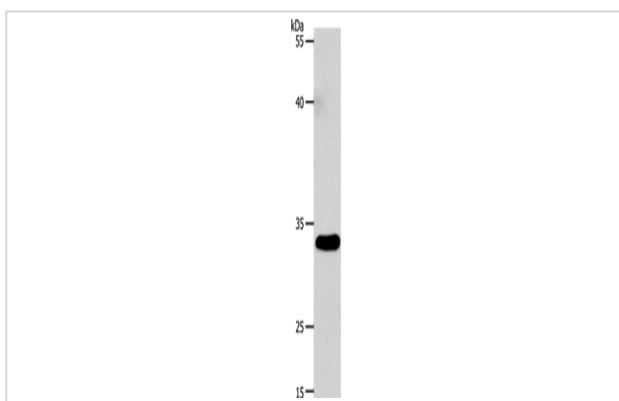
Description

Product Name	VGLL1 Antibody
Host Species	Rabbit
Clonality	Polyclonal
Purification	Antigen affinity purification
Applications	WB
Species Reactivity	Hu
Specificity	The antibody detects endogenous levels of total VGLL1 protein.
Immunogen Type	Peptide
Immunogen Description	Synthetic peptide of human VGLL1
Target Name	VGLL1
Other Names	TDU; VGL1
Accession No.	Swiss-Prot#:Q99990NCBI Gene ID:51442Gene Accssion:NP_057351
Calculated MW	29 kDa
Concentration	2
Formulation	Rabbit IgG in pH7.4 PBS, 0.05% NaN ₃ , 40% Glycerol.
Storage	Store at -20°C

Application Details

WB dilution:1:2000-10000

Images



Gel: 10%SDS-PAGE, Lysate: 40 μ g, Lane: 293T cells,
 Primary antibody:47455(VGLL1 Antibody) at dilution 1/4600,
 Secondary antibody: Goat anti rabbit IgG at 1/8000 dilution,
 Exposure time: 45 seconds

Background

The protein encoded by this gene binds proteins of the TEA domain family of transcription factors (TEFs) through the Vg (vestigial) homology region found in its N-terminus. It may thus function as a specific coactivator for the mammalian TEFs. TDU interacted directly with the TEA domain family member, TEF1, and deletion of the Vg homology region abolished the interaction. The TDU-TEF1 dimer activated a reporter plasmid, and expression of TDU in *Drosophila* rescued loss of Vg function. The interaction was stronger in cardiac myocytes, suggesting a myocyte-specific factor may participate in the interaction. Vgll1 was weakly active in driving expression of a reporter gene from the mouse skeletal muscle alpha-actin promoter,

and Vgll1 could partially reverse the inhibitory effect of TEF1 in this assay.

Note: This product is for in vitro research use only and is not intended for use in humans or animals.