

VSNL1 Antibody

Catalog No: #47458

Orders: order@signalwayantibody.comSupport: tech@signalwayantibody.com

Description

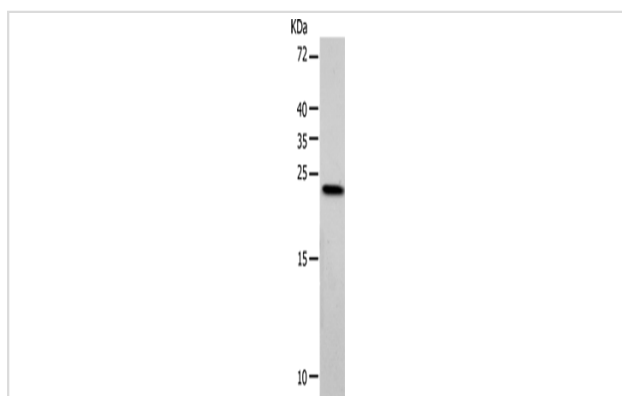
| | |
|-----------------------|-----------------------------------------------------------------|
| Product Name | VSNL1 Antibody |
| Host Species | Rabbit |
| Clonality | Polyclonal |
| Purification | Antigen affinity purification |
| Applications | WB, IHC |
| Species Reactivity | Hu, Ms, Rt |
| Specificity | The antibody detects endogenous levels of total VSNL1 protein. |
| Immunogen Type | Peptide |
| Immunogen Description | Synthetic peptide of human VSNL1 |
| Target Name | VSNL1 |
| Other Names | HLP3, VILIP, HPCAL3, HUVISL1, VILIP-1 |
| Accession No. | Swiss-Prot#:P62760NCBI Gene ID:7447Gene Accssion:NP_003376 |
| Calculated MW | 22 kDa |
| Concentration | 0.4 |
| Formulation | Rabbit IgG in pH7.4 PBS, 0.05% NaN ₃ , 40% Glycerol. |
| Storage | Store at -20°C |

Application Details

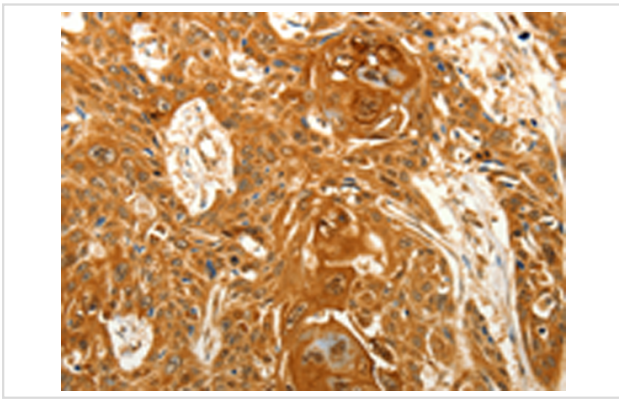
WB dilution:1:1000-3000

IHC dilution:1: 50-200

Images



Gel: 10%SDS-PAGE, Lysate: 40 μ g, Lane: Hela cells,
 Primary antibody:47458(VSNL1 Antibody) at dilution 1/900,
 Secondary antibody: Goat anti rabbit IgG at 1/8000 dilution,
 Exposure time: 5 seconds



The image is immunohistochemistry of paraffin-embedded Human esophagus cancer tissue using 47458(VSNL1 Antibody) at dilution 1/25.(Original magnification: 200)

Background

This gene is a member of the visinin/recoverin subfamily of neuronal calcium sensor proteins. The encoded protein is strongly expressed in granule cells of the cerebellum where it associates with membranes in a calcium-dependent manner and modulates intracellular signaling pathways of the central nervous system by directly or indirectly regulating the activity of adenylyl cyclase. Alternatively spliced transcript variants have been observed, but their full-length nature has not been determined.

Note: This product is for in vitro research use only and is not intended for use in humans or animals.