

YES1 Antibody

Catalog No: #47465

Orders: order@signalwayantibody.comSupport: tech@signalwayantibody.com

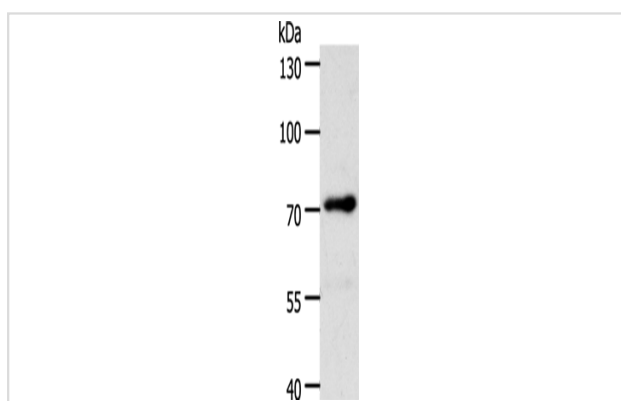
Description

Product Name	YES1 Antibody
Host Species	Rabbit
Clonality	Polyclonal
Purification	Antigen affinity purification
Applications	WB
Species Reactivity	Hu, Ms, Rt
Specificity	The antibody detects endogenous levels of total YES1? protein.
Immunogen Type	Peptide
Immunogen Description	Synthetic peptide of human YES1?
Target Name	YES1
Other Names	Yes; c-yes; HsT441; P61-YES
Accession No.	Swiss-Prot#:P07947NCBI Gene ID:7525Gene Accssion:NP_005424
Calculated MW	61 kDa
Concentration	3.5
Formulation	Rabbit IgG in pH7.4 PBS, 0.05% NaN ₃ , 40% Glycerol.
Storage	Store at -20°C

Application Details

WB dilution:1:1000-5000

Images



Gel: 8%SDS-PAGE, Lysate: 40 μ g, Lane: Lncap cells,
 Primary antibody:47465(YES1? Antibody) at dilution 1/1750,
 Secondary antibody: Goat anti rabbit IgG at 1/8000 dilution,
 Exposure time: 10 seconds

Background

This gene is the cellular homolog of the Yamaguchi sarcoma virus oncogene. The encoded protein has tyrosine kinase activity and belongs to the src family of proteins. This gene lies in close proximity to thymidylate synthase gene on chromosome 18, and a corresponding pseudogene has been found on chromosome 22.

Note: This product is for in vitro research use only and is not intended for use in humans or animals.