

WBP2 Antibody

Catalog No: #47468

Orders: order@signalwayantibody.comSupport: tech@signalwayantibody.com

Description

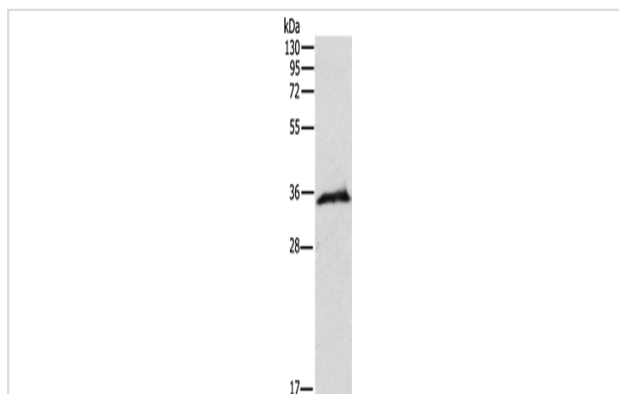
Product Name	WBP2 Antibody
Host Species	Rabbit
Clonality	Polyclonal
Purification	Antigen affinity purification
Applications	WB, IHC
Species Reactivity	Hu, Ms, Rt
Specificity	The antibody detects endogenous levels of total WBP2 protein.
Immunogen Type	Peptide
Immunogen Description	Synthetic peptide of human WBP2
Target Name	WBP2
Other Names	WBP-2
Accession No.	Swiss-Prot#:Q969T9NCBI Gene ID:23558Gene Accssion:NP_036610
Calculated MW	28 kDa
Concentration	0.7
Formulation	Rabbit IgG in pH7.4 PBS, 0.05% NaN ₃ , 40% Glycerol.
Storage	Store at -20°C

Application Details

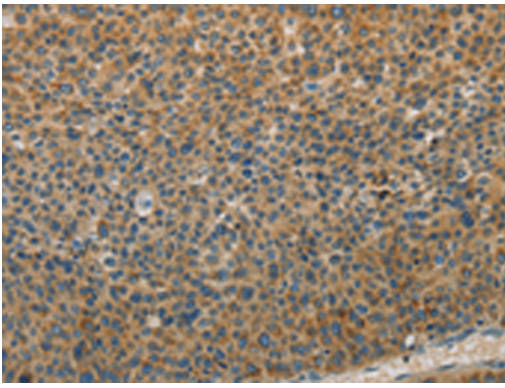
WB dilution:1:200-1000

IHC dilution:1: 50-100

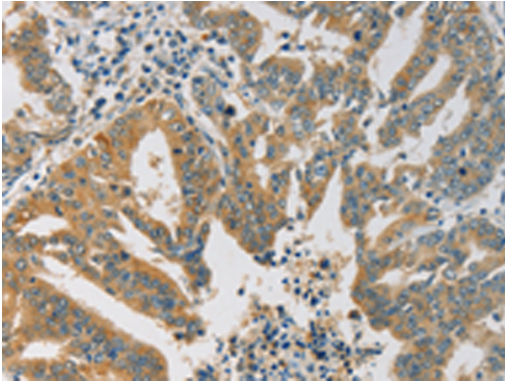
Images



Gel: 12%SDS-PAGE, Lysate: 40 μ g, Lane: Mouse thymus tissue, Primary antibody:47468(WBP2 Antibody) at dilution 1/250, Secondary antibody: Goat anti rabbit IgG at 1/8000 dilution, Exposure time: 5 seconds



The image is immunohistochemistry of paraffin-embedded Human liver cancer tissue using 47468(WBP2 Antibody) at dilution 1/20.(Original magnification: 200)



The image is immunohistochemistry of paraffin-embedded Human gastric cancer tissue using 47468(WBP2 Antibody) at dilution 1/20.(Original magnification: 200)

Background

The globular WW domain is composed of 38 to 40 semiconserved amino acids shared by proteins of diverse functions including structural, regulatory, and signaling proteins. The domain is involved in mediating protein-protein interactions through the binding of polyproline ligands. This gene encodes a WW domain binding protein, which binds to the WW domain of Yes kinase-associated protein by its PY motifs. The function of this protein has not been determined.

Note: This product is for in vitro research use only and is not intended for use in humans or animals.