

WDR74 Antibody

Catalog No: #47474

Orders: order@signalwayantibody.comSupport: tech@signalwayantibody.com

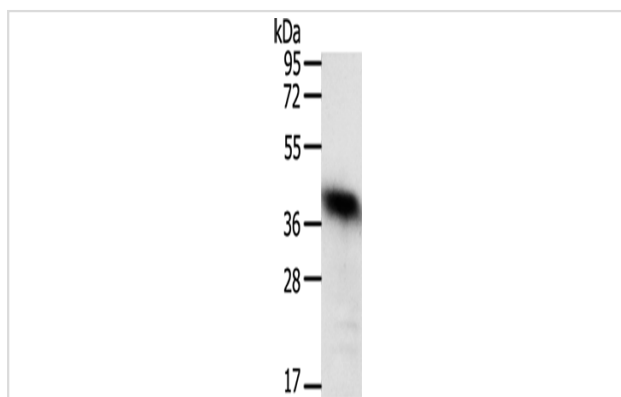
Description

Product Name	WDR74 Antibody
Host Species	Rabbit
Clonality	Polyclonal
Purification	Antigen affinity purification
Applications	WB
Species Reactivity	Hu, Ms
Specificity	The antibody detects endogenous levels of total WDR74 ? protein.
Immunogen Type	Peptide
Immunogen Description	Synthetic peptide of human WDR74 ?
Target Name	WDR74
Accession No.	Swiss-Prot#:Q6RFH5NCBI Gene ID:54663Gene Accssion:NP_060563
Calculated MW	42 kDa
Concentration	0.9
Formulation	Rabbit IgG in pH7.4 PBS, 0.05% NaN ₃ , 40% Glycerol.
Storage	Store at -20°C

Application Details

WB dilution:1:200-1000

Images



Gel: 10%SDS-PAGE, Lysate: 40 μ g, Lane: Human liver cancer tissue, Primary antibody:47474(WDR74 ? Antibody) at dilution 1/450, Secondary antibody: Goat anti rabbit IgG at 1/8000 dilution, Exposure time: 10 minutes

Background

This protein contains six WD repeats. The subcellular location of this protein is Nucleus. Wdr74 is required for RNA transcription, processing and/or stability during preimplantation development and is an essential gene in the mouse.

Note: This product is for in vitro research use only and is not intended for use in humans or animals.