

## ZBTB26 Antibody

Catalog No: #47477

Orders: order@signalwayantibody.com

Support: tech@signalwayantibody.com

## Description

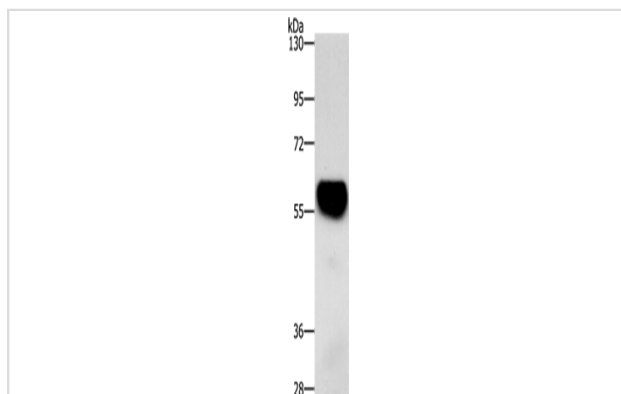
Product Name	ZBTB26 Antibody
Host Species	Rabbit
Clonality	Polyclonal
Purification	Antigen affinity purification
Applications	WB, IHC
Species Reactivity	Hu, Ms
Specificity	The antibody detects endogenous levels of total ZBTB26 ? protein.
Immunogen Type	Peptide
Immunogen Description	Synthetic peptide of human ZBTB26 ?
Target Name	ZBTB26
Other Names	ZNF481; bioref
Accession No.	Swiss-Prot#:Q9HCK0NCBI Gene ID:57684Gene Accssion:NP_065975
Calculated MW	50 kDa
Concentration	2.8
Formulation	Rabbit IgG in pH7.4 PBS, 0.05% NaN <sub>3</sub> , 40% Glycerol.
Storage	Store at -20°C

## Application Details

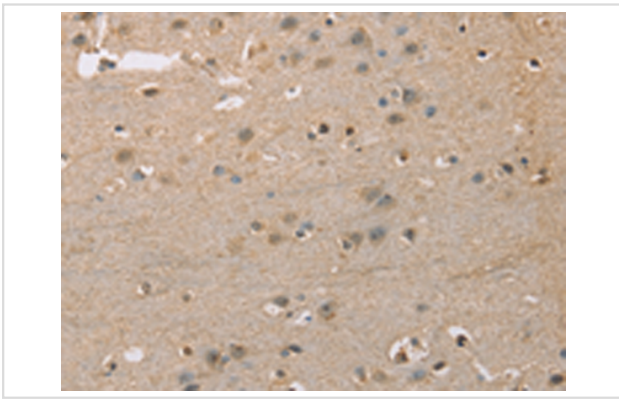
WB dilution:1:1000-5000

IHC dilution:1: 50-200

## Images



Gel: 8%SDS-PAGE, Lysate: 40  $\mu$ g, Lane: Mouse heart tissue, Primary antibody:47477(ZBTB26 ? Antibody) at dilution 1/500, Secondary antibody: Goat anti rabbit IgG at 1/8000 dilution, Exposure time: 5 seconds



The image is immunohistochemistry of paraffin-embedded Human brain tissue using 47477(ZBTB26 ? Antibody) at dilution 1/50.(Original magnification: 200)

## Background

Zinc finger and BTB domain-containing protein 26 (ZBTB26), also known as ZNF481, is a 441 amino acid member of the Krppel C2H2-type zinc-finger protein family. Localized to the nucleus, ZBTB26 contains a BTB domain, also known as a POZ domain, which inhibits DNA binding and mediates homotypic and heterotypic dimerization. Characteristics of the BTB domain suggest that ZBTB26 functions as a transcription regulator.

Note: This product is for in vitro research use only and is not intended for use in humans or animals.