

ZGPAT Antibody

Catalog No: #47485

Orders: order@signalwayantibody.comSupport: tech@signalwayantibody.com

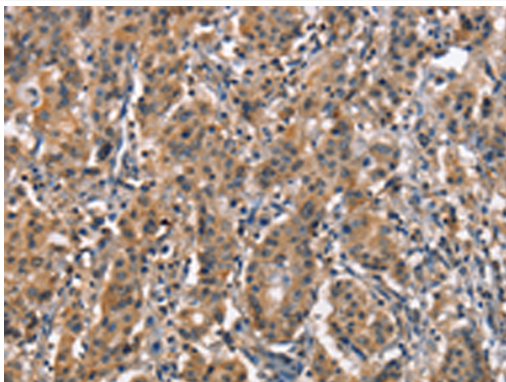
Description

Product Name	ZGPAT Antibody
Host Species	Rabbit
Clonality	Polyclonal
Purification	Antigen affinity purification
Applications	IHC
Species Reactivity	Hu
Specificity	The antibody detects endogenous levels of total ZGPAT ? protein.
Immunogen Type	Peptide
Immunogen Description	Synthetic peptide of human ZGPAT ?
Target Name	ZGPAT
Other Names	ZIP; ZC3H9; GPATC6; GPATCH6; ZC3HDC9; KIAA1847; RP4-583P15.3
Accession No.	Swiss-Prot#:Q8N5A5NCBI Gene ID:84619Gene Accssion:NP_115916
Concentration	0.1
Formulation	Rabbit IgG in pH7.4 PBS, 0.05% NaN ₃ , 40% Glycerol.
Storage	Store at -20°C

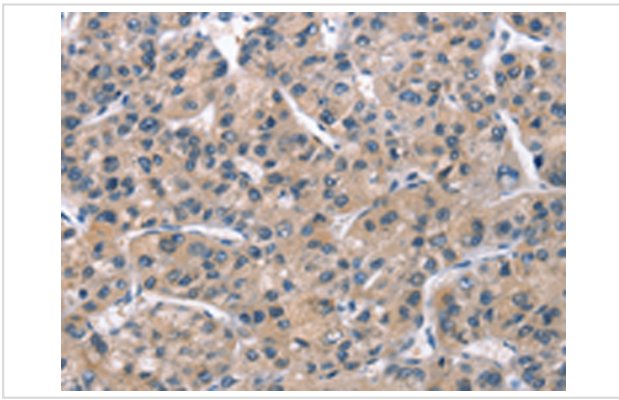
Application Details

IHC dilution:1: 50-200

Images



The image is immunohistochemistry of paraffin-embedded Human gastric cancer tissue using 47485(ZGPAT ? Antibody) at dilution 1/60.(Original magnification: 200)



The image is immunohistochemistry of paraffin-embedded Human liver cancer tissue using 47485(ZGPAT ? Antibody) at dilution 1/60.(Original magnification: 200)

Background

ZGPAT (Zinc finger CCCH-type with G patch domain-containing protein), also known as zinc finger CCCH domain-containing protein 9 (ZC3HDC9) and G patch domain-containing protein 6 (GPATC6), is a 531 amino acid protein that contains a G-patch domain, which is typically found within RNA-binding proteins. Proteins that contain the G-patch domain include some tumor suppressor and DNA-damage repair proteins. ZGPAT also contains one C3H1-type zinc finger, which further supports its probable role as an RNA-binding protein. The gene encoding ZGPAT is inactivated via differential methylation in a oligodendroglioma cell line, suggesting that ZGPAT may have utility as a biomarker. There are two isoforms of ZGPAT that are produced as a result of alternative splicing events.

Note: This product is for in vitro research use only and is not intended for use in humans or animals.