

ETV3 Antibody

Catalog No: #47525

Orders: order@signalwayantibody.comSupport: tech@signalwayantibody.com

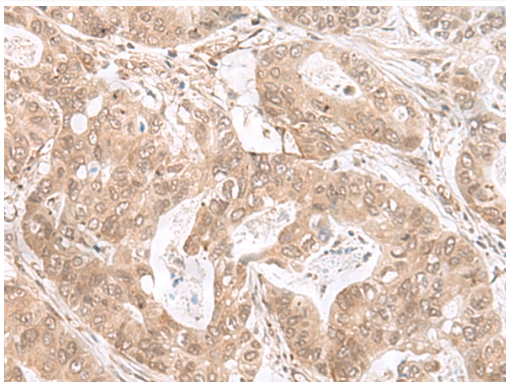
Description

Product Name	ETV3 Antibody
Host Species	Rabbit
Clonality	Polyclonal
Purification	Antigen affinity purification
Applications	IHC
Species Reactivity	Hu, Ms
Specificity	The antibody detects endogenous levels of total ETV3 protein.
Immunogen Type	Peptide
Immunogen Description	Synthetic peptide of human ETV3
Target Name	ETV3
Other Names	PE1; METS; PE-1; bA110J1.4
Accession No.	Swiss-Prot#:P41162NCBI Gene ID:2117Gene Accssion:NP_001138784
Concentration	0.7
Formulation	Rabbit IgG in pH7.4 PBS, 0.05% NaN ₃ , 40% Glycerol.
Storage	Store at -20°C

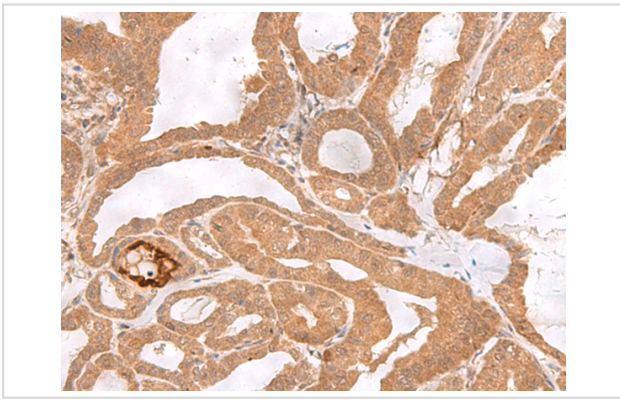
Application Details

IHC dilution:1: 30-150

Images



The image is immunohistochemistry of paraffin-embedded Human gastric cancer tissue using 47525(ETV3 Antibody) at dilution 1/25.(Original magnification: 200)



The image is immunohistochemistry of paraffin-embedded Human thyroid cancer tissue using 47525(ETV3 Antibody) at dilution 1/25.(Original magnification: 200)

Background

Transcriptional repressor that contribute to growth arrest during terminal macrophage differentiation by repressing target genes involved in Ras-dependent proliferation. Represses MMP1 promoter activity.

Note: This product is for in vitro research use only and is not intended for use in humans or animals.