

## ZNF560 Antibody

Catalog No: #47528

Orders: [order@signalwayantibody.com](mailto:order@signalwayantibody.com)Support: [tech@signalwayantibody.com](mailto:tech@signalwayantibody.com)

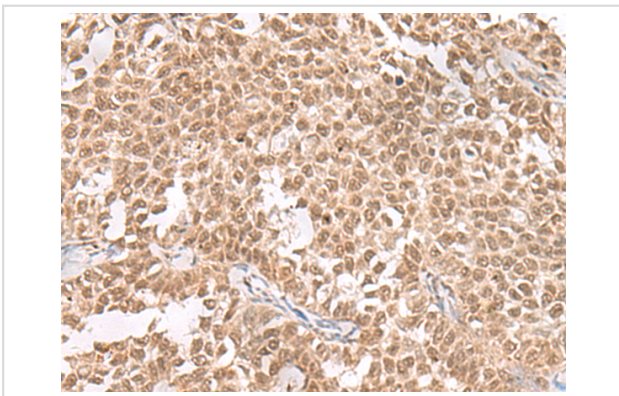
## Description

Product Name	ZNF560 Antibody
Host Species	Rabbit
Clonality	Polyclonal
Purification	Antigen affinity purification
Applications	IHC
Species Reactivity	Hu
Specificity	The antibody detects endogenous levels of total ZNF560 protein.
Immunogen Type	Peptide
Immunogen Description	Synthetic peptide of human ZNF560
Target Name	ZNF560
Accession No.	Swiss-Prot#:Q96MR9NCBI Gene ID:147741Gene Accssion:NP_689689
Concentration	0.7
Formulation	Rabbit IgG in pH7.4 PBS, 0.05% NaN <sub>3</sub> , 40% Glycerol.
Storage	Store at -20°C

## Application Details

IHC dilution:1: 30-150

## Images



The image is immunohistochemistry of paraffin-embedded Human ovarian cancer tissue using 47528(ZNF560 Antibody) at dilution 1/25.(Original magnification: 200)

## Background

May be involved in transcriptional regulation.

Note: This product is for in vitro research use only and is not intended for use in humans or animals.