

## GALR1 Antibody

Catalog No: #47567

Orders: [order@signalwayantibody.com](mailto:order@signalwayantibody.com)Support: [tech@signalwayantibody.com](mailto:tech@signalwayantibody.com)

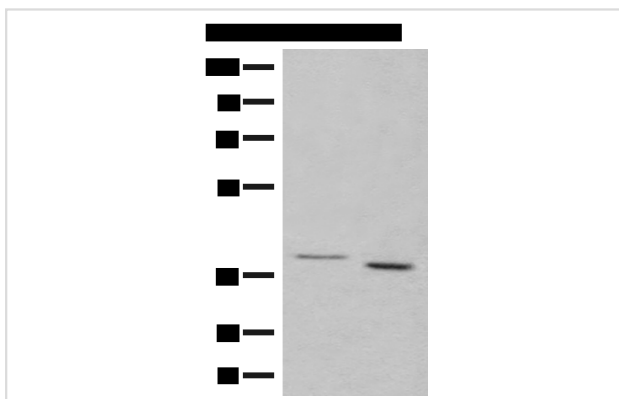
## Description

Product Name	GALR1 Antibody
Host Species	Rabbit
Clonality	Polyclonal
Purification	Antigen affinity purification
Applications	WB
Species Reactivity	Hu, Ms, Rt
Specificity	The antibody detects endogenous levels of total GALR1 protein.
Immunogen Type	Peptide
Immunogen Description	Synthetic peptide of human GALR1
Target Name	GALR1
Other Names	GALNR; GALNR1
Accession No.	Swiss-Prot#:P47211NCBI Gene ID:2587Gene Accssion:NP_001471
Calculated MW	39 kDa
Concentration	1.8
Formulation	Rabbit IgG in pH7.4 PBS, 0.05% NaN <sub>3</sub> , 40% Glycerol.
Storage	Store at -20°C

## Application Details

WB dilution:1:500-2000

## Images



Gel: 8%SDS-PAGE, Lysate: 40  $\mu$ g, Lane 1-2: K562 and 293T cell lysates, Primary antibody:47567(GALR1 Antibody) at dilution 1/500, Secondary antibody: Goat anti rabbit IgG at 1/8000 dilution, Exposure time: 20 seconds

## Background

The neuropeptide galanin elicits a range of biological effects by interaction with specific G-protein-coupled receptors. Galanin receptors are seven-transmembrane proteins shown to activate a variety of intracellular second-messenger pathways. GALR1 inhibits adenylyl cyclase via a G protein of the Gi/Go family. GALR1 is widely expressed in the brain and spinal cord, as well as in peripheral sites such as the small intestine and heart.

## Published Papers

---

el at., Alleviation of *Limosilactobacillus reuteri* in polycystic ovary syndrome protects against circadian dysrhythmia-induced dyslipidemia via capric acid and GALR1 signaling *In NPJ Biofilms Microbiomes* On 2023 Jul 8 by Shang Li , Junyu Zhai et al.. PMID:37422471, , (2023)

PMID:37422471

---

---

Note: This product is for in vitro research use only and is not intended for use in humans or animals.