

NIPSNAP1 Antibody

Catalog No: #47689

Orders: order@signalwayantibody.comSupport: tech@signalwayantibody.com

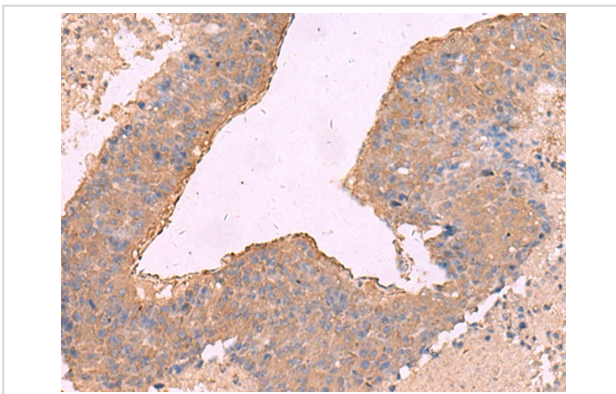
Description

| | |
|-----------------------|---|
| Product Name | NIPSNAP1 Antibody |
| Host Species | Rabbit |
| Clonality | Polyclonal |
| Purification | Antigen affinity purification |
| Applications | IHC |
| Species Reactivity | Hu, Ms |
| Specificity | The antibody detects endogenous levels of total NIPSNAP1 protein. |
| Immunogen Type | Peptide |
| Immunogen Description | Synthetic peptide of human NIPSNAP1 |
| Target Name | NIPSNAP1 |
| Accession No. | Swiss-Prot#:Q9BPW8NCBI Gene ID:8508Gene Accsion:NP_003625 |
| Concentration | 1.4 |
| Formulation | Rabbit IgG in pH7.4 PBS, 0.05% NaN ₃ , 40% Glycerol. |
| Storage | Store at -20°C |

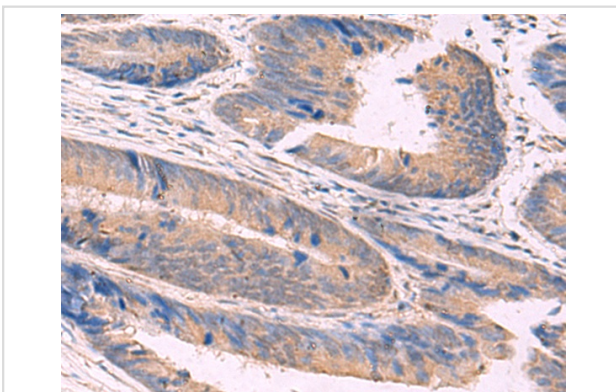
Application Details

IHC dilution:1: 50-300

Images



The image is immunohistochemistry of paraffin-embedded Human liver cancer tissue using 47689(NIPSNAP1 Antibody) at dilution 1/50.(Original magnification: 200)



The image is immunohistochemistry of paraffin-embedded Human colorectal cancer tissue using 47689(NIPSNAP1 Antibody) at dilution 1/50.(Original magnification: 200)

Background

This gene encodes a member of the NipSnap family of proteins that may be involved in vesicular transport. A similar protein in mice inhibits the calcium channel TRPV6, and is also localized to the inner mitochondrial membrane where it may play a role in mitochondrial DNA maintenance. A pseudogene of this gene is located on the short arm of chromosome 17. Alternatively spliced transcript variants encoding multiple isoforms have been observed for this gene.

Note: This product is for in vitro research use only and is not intended for use in humans or animals.