

## TIMM22 Antibody

Catalog No: #47717

Orders: [order@signalwayantibody.com](mailto:order@signalwayantibody.com)Support: [tech@signalwayantibody.com](mailto:tech@signalwayantibody.com)

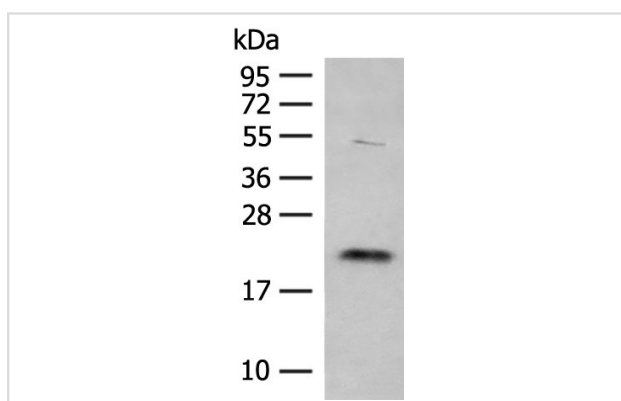
## Description

Product Name	TIMM22 Antibody
Host Species	Rabbit
Clonality	Polyclonal
Purification	Antigen affinity purification
Applications	WB
Species Reactivity	Hu, Ms, Rt
Specificity	The antibody detects endogenous levels of total TIMM22 protein.
Immunogen Type	Peptide
Immunogen Description	Fusion protein of human TIMM22
Target Name	TIMM22
Other Names	TEX4; TIM22
Accession No.	Swiss-Prot#:Q9Y584NCBI Gene ID:29928Gene Accssion:BC002324
Calculated MW	20 kDa
Concentration	0.9
Formulation	Rabbit IgG in pH7.4 PBS, 0.05% NaN <sub>3</sub> , 40% Glycerol.
Storage	Store at -20°C

## Application Details

WB dilution:1:200-1000

## Images



Gel: 12%SDS-PAGE, Lysate: 40  $\mu$ g, Lane: HEPG2 cell lysate, Primary antibody:47717(TIMM22 Antibody) at dilution 1/250, Secondary antibody: Goat anti rabbit IgG at 1/8000 dilution, Exposure time: 30 seconds

## Background

Multipass transmembrane proteins are brought into mitochondria and inserted into the mitochondrial inner membrane by way of the TIM22 complex. This complex has six subunits and is a twin-pore translocase. The protein encoded by this gene is a subunit of TIM22 and represents the voltage-activated and signal-gated channel.

---

Note: This product is for in vitro research use only and is not intended for use in humans or animals.