

PCYT2 Antibody

Catalog No: #47742

Orders: order@signalwayantibody.comSupport: tech@signalwayantibody.com

Description

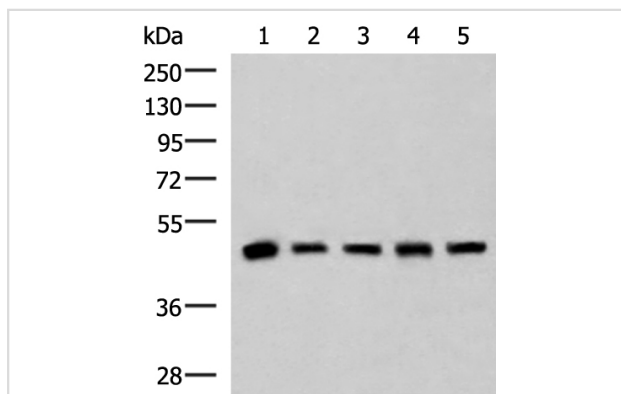
Product Name	PCYT2 Antibody
Host Species	Rabbit
Clonality	Polyclonal
Purification	Antigen affinity purification
Applications	WB, IHC
Species Reactivity	Hu, Ms, Rt
Specificity	The antibody detects endogenous levels of total PCYT2 protein.
Immunogen Type	Peptide
Immunogen Description	Fusion protein of human PCYT2
Target Name	PCYT2
Other Names	ET
Accession No.	Swiss-Prot#:Q99447NCBI Gene ID:5833Gene Accssion:BC000351
Calculated MW	44 kDa
Concentration	1
Formulation	Rabbit IgG in pH7.4 PBS, 0.05% NaN ₃ , 40% Glycerol.
Storage	Store at -20°C

Application Details

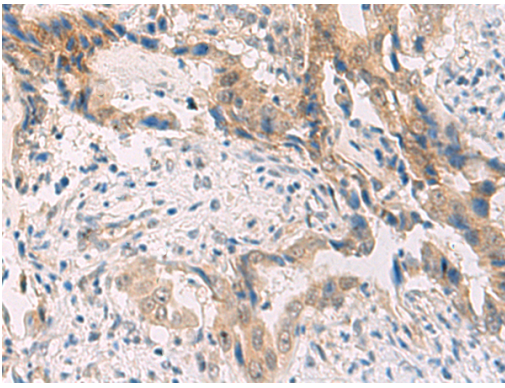
WB dilution:1:1000-5000

IHC dilution:1: 40-200

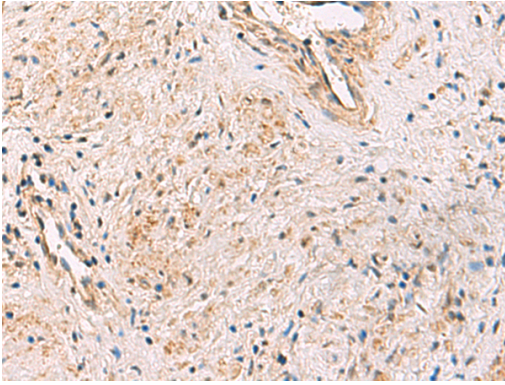
Images



Gel: 8%SDS-PAGE, Lysate: 40 μ g, Lane 1-5: Human fetal liver tissue, HepG2, A172, Hela and Jurkat cell lysates, Primary antibody:47742(PCYT2 Antibody) at dilution 1/800, Secondary antibody: Goat anti rabbit IgG at 1/5000 dilution, Exposure time: 5 seconds



The image is immunohistochemistry of paraffin-embedded Human cervical cancer tissue using 47742(PCYT2 Antibody) at dilution 1/55.(Original magnification: 200)



The image is immunohistochemistry of paraffin-embedded Human prostate cancer tissue using 47742(PCYT2 Antibody) at dilution 1/55.(Original magnification: 200)

Background

This gene encodes an enzyme that catalyzes the formation of CDP-ethanolamine from CTP and phosphoethanolamine in the Kennedy pathway of phospholipid synthesis. Alternative splicing results in multiple transcript variants.

Note: This product is for in vitro research use only and is not intended for use in humans or animals.