

ELMO2 Antibody

Catalog No: #47754



Orders: order@signalwayantibody.com

Support: tech@signalwayantibody.com

Description

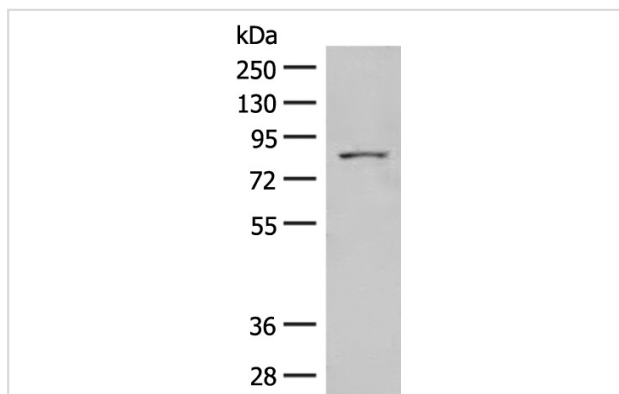
Product Name	ELMO2 Antibody
Host Species	Rabbit
Clonality	Polyclonal
Purification	Antigen affinity purification
Applications	WB, IHC
Species Reactivity	Hu, Ms
Specificity	The antibody detects endogenous levels of total ELMO2 protein.
Immunogen Type	Peptide
Immunogen Description	Synthetic peptide of human ELMO2
Target Name	ELMO2
Other Names	VMPI; CED12; CED-12; ELMO-2; Ced-12A
Accession No.	Swiss-Prot#:Q96JJ3NCBI Gene ID:63916Gene Accssion:NP_573403
Calculated MW	83 kDa
Concentration	0.8
Formulation	Rabbit IgG in pH7.4 PBS, 0.05% NaN ₃ , 40% Glycerol.
Storage	Store at -20°C

Application Details

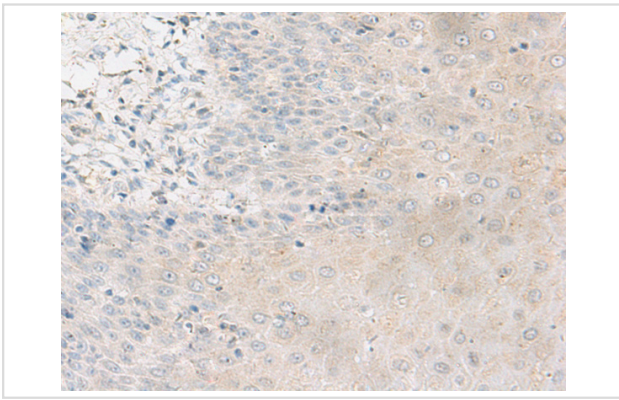
WB dilution:1:200-1000

IHC dilution:1: 20-100

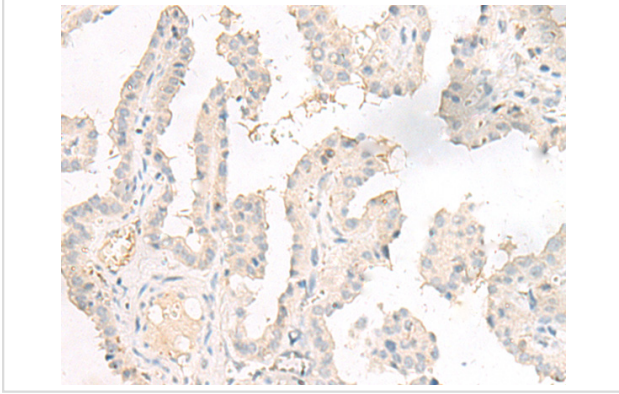
Images



Gel: 8%SDS-PAGE, Lysate: 40 μ g, Lane: Human fetal liver tissue lysate, Primary antibody:47754(ELMO2 Antibody) at dilution 1/200, Secondary antibody: Goat anti rabbit IgG at 1/8000 dilution, Exposure time: 1 minute



The image is immunohistochemistry of paraffin-embedded Human esophagus cancer tissue using 47754(ELMO2 Antibody) at dilution 1/30.(Original magnification: 200)



The image is immunohistochemistry of paraffin-embedded Human thyroid cancer tissue using 47754(ELMO2 Antibody) at dilution 1/30.(Original magnification: 200)

Background

The protein encoded by this gene interacts with the dedicator of cyto-kinesis 1 protein. Similarity to a *C. elegans* protein suggests that this protein may function in phagocytosis of apoptotic cells and in cell migration. Alternative splicing results in multiple transcript variants.

Note: This product is for in vitro research use only and is not intended for use in humans or animals.