

Rock-1 Polyclonal Antibody

Catalog No: #41414



Package Size: #41414-1 50ul #41414-2 100ul

Orders: order@signalwayantibody.comSupport: tech@signalwayantibody.com

Description

Product Name	Rock-1 Polyclonal Antibody
Host Species	Rabbit
Clonality	Polyclonal
Purification	The antibody was affinity-purified from rabbit antiserum by affinity-chromatography using epitope-specific immunogen.
Applications	WB IHC IF ELISA
Species Reactivity	Hu Ms Rt Mk
Specificity	Rock-1 Polyclonal Antibody detects endogenous levels of Rock-1 protein.
Immunogen Description	Synthesized peptide derived from the Internal region of human Rock-1.
Target Name	Rock-1
Other Names	ROCK1; Rho-associated protein kinase 1; Renal carcinoma antigen NY-REN-35; Rho-associated; coiled-coil-containing protein kinase 1; Rho-associated, coiled-coil-containing protein kinase I; ROCK-I; p160 ROCK-1; p160ROCK
Accession No.	Swiss-Prot: Q13464NCBI Gene ID: 6093
SDS-PAGE MW	158kd
Concentration	1mg/ml
Formulation	Liquid in PBS containing 50% glycerol, 0.5% BSA and 0.02% sodium azide.
Storage	Store at -20°C/1 year

Application Details

Western Blot: 1/500 - 1/2000.

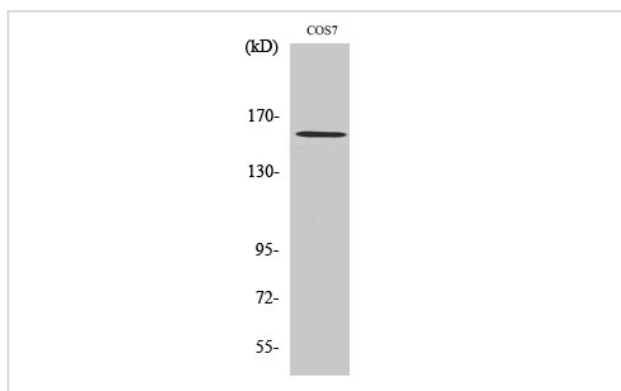
Immunohistochemistry: 1/100 - 1/300. Immunocytochemistry: 1/200 - 1/1000.

IF 1:50-200

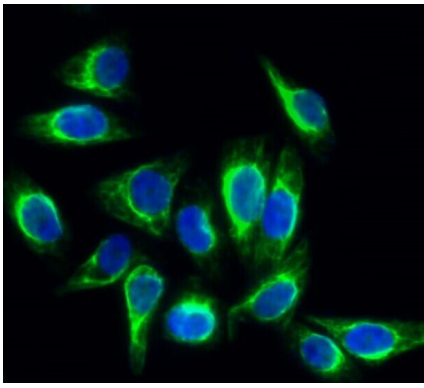
ELISA: 1/20000.

Not yet tested in other applications.

Images



Western Blot analysis of COS7 cells using Rock-1 Polyclonal Antibody



Immunofluorescence analysis of HeLa cell. 1, Rock-1 Polyclonal Antibody (green) was diluted at 1:200 (4° overnight). 2, Goat Anti Rabbit Alexa Fluor 488 was diluted at 1:1000 (room temperature, 50min). 3 DAPI (blue) 10min.

Note: This product is for in vitro research use only and is not intended for use in humans or animals.