

Y14 Antibody

Catalog No: #48187

Package Size: #48187-1 50ul #48187-2 100ul

Orders: order@signalwayantibody.com

Support: tech@signalwayantibody.com

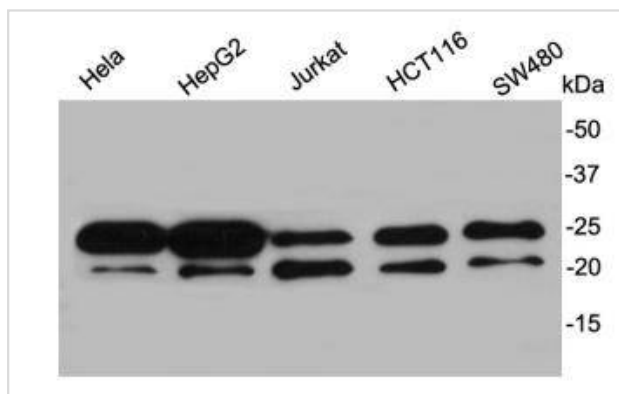
Description

Product Name	Y14 Antibody
Host Species	Rabbit
Clonality	Polyclonal
Purification	ProA affinity purified
Applications	WB, ICC, IHC
Species Reactivity	Hu, Ms, Rt
Immunogen Description	recombinant protein
Other Names	Binder of OVCA1 1 antibody Binder of OVCA1-1 antibody BOV 1 antibody BOV 1A antibody BOV 1B antibody BOV 1C antibody BOV-1 antibody BOV1 antibody BOV1A antibody BOV1B antibody BOV1C antibody HSPC 114 antibody HSPC114 antibody MDS 014 antibody MDS014 antibody RBM 8 antibody RBM 8A antibody RBM 8B antibody RBM8 antibody rbm8a antibody RBM8A_HUMAN antibody RBM8B antibody Ribonucleoprotein RBM 8 antibody Ribonucleoprotein RBM 8A antibody Ribonucleoprotein RBM8 antibody Ribonucleoprotein RBM8A antibody RNA binding motif protein 8 antibody RNA binding motif protein 8A antibody RNA binding motif protein 8B antibody RNA binding protein 8A antibody RNA binding protein Y14 antibody RNA-binding motif protein 8A antibody RNA-binding protein 8A antibody RNA-binding protein Y14 antibody ZRNP antibody ZRNP 1 antibody ZRNP1 antibody
Accession No.	Swiss-Prot#:Q9Y5S9
Calculated MW	20kDa
Formulation	1*TBS (pH7.4), 1%BSA, 40%Glycerol. Preservative: 0.05% Sodium Azide.
Storage	Store at -20°C

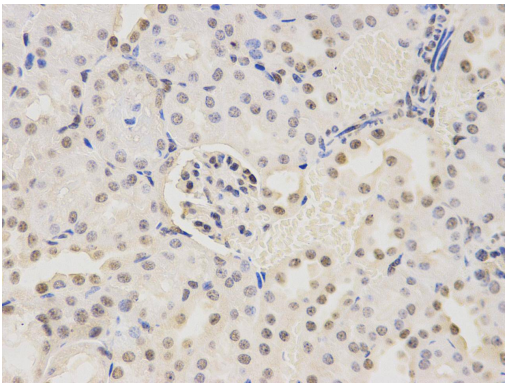
Application Details

WB: 1:2000-1:5000 IHC: 1:200 ICC: 1:200

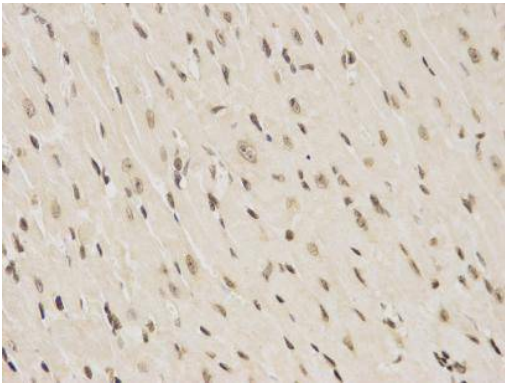
Images



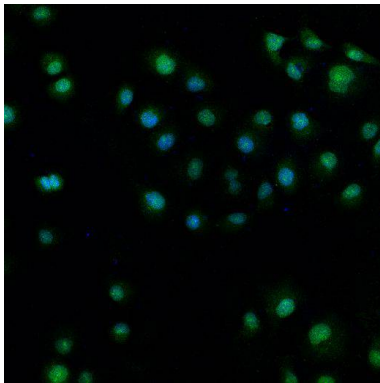
Western blot analysis on different cell lysates using anti-Y14 rabbit polyclonal antibodies.



Immunohistochemical analysis of paraffin-embedded mouse kidney tissue using anti- Y14 rabbit polyclonal antibody.



Immunohistochemical analysis of paraffin-embedded mouse heart tissue using anti- Y14 rabbit polyclonal antibody.



ICC staining Y14 in HUVEC cells (green). Cells were fixed in paraformaldehyde, permeabilised with 0.25% Triton X100/PBS and counterstained with DAPI in order to highlight the nucleus (blue).

Background

RNA-binding protein 8A is a protein that in humans is encoded by the RBM8A gene. This gene encodes a protein with a conserved RNA-binding motif. The protein is found predominantly in the nucleus, although it is also present in the cytoplasm. It is preferentially associated with mRNAs produced by splicing, including both nuclear mRNAs and newly exported cytoplasmic mRNAs. It is thought that the protein remains associated with spliced mRNAs as a tag to indicate where introns had been present, thus coupling pre- and post-mRNA splicing events. Previously, it was thought that two genes encode this protein, RBM8A and RBM8B; it is now thought that the RBM8B locus is a pseudogene. Two alternative start codons result in two forms of the protein, and this gene also uses multiple polyadenylation sites.

References

- 1."A novel mode of RBD-protein recognition in the Y14-Mago complex." Fribourg S., Gatfield D., Izaurralde E., Conti E. Nat. Struct. Biol. 10:433-439(2003)
- 2."Molecular insights into the interaction of PYM with the Mago-Y14 core of the exon junction complex." Bono F., Ebert J., Unterholzner L., Guettler T., Izaurralde E., Conti E. EMBO Rep. 5:304-310(2004)
- 3."Quantitative phosphoproteomic analysis of T cell receptor signaling reveals system-wide modulation of protein-protein interactions." Mayya V., Lundgren D.H., Hwang S.-I., Rezaul K., Wu L., Eng J.K., Rodionov V., Han D.K. Sci. Signal. 2:RA46-RA46(2009)

Note: This product is for in vitro research use only and is not intended for use in humans or animals.