

## YBOX1 / YB-1 Antibody

Catalog No: #48232



Package Size: #48232-1 50ul #48232-2 100ul

Orders: order@signalwayantibody.com

Support: tech@signalwayantibody.com

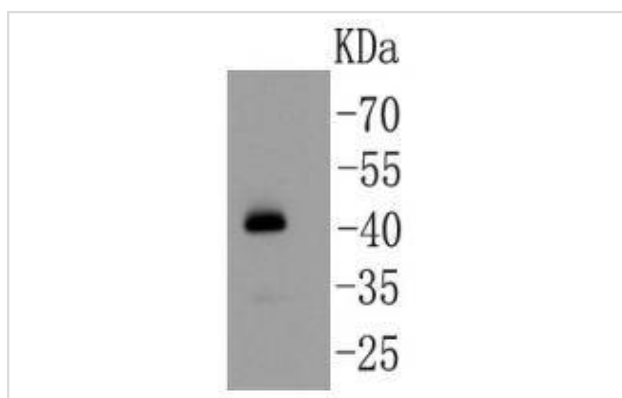
## Description

Product Name	YBOX1 / YB-1 Antibody
Host Species	Rabbit
Clonality	Polyclonal
Purification	Peptide affinity purified
Applications	WB, ICC, IHC, FC
Species Reactivity	Hu, Ms, Rt
Immunogen Description	peptide
Other Names	BP 8 antibody CBF-A antibody CCAAT binding transcription factor I subunit A antibody CCAAT-binding transcription factor I subunit A antibody CSDA2 antibody CSDB antibody DBPB antibody DNA binding protein B antibody DNA-binding protein B antibody EFI-A antibody Enhancer factor I subunit A antibody MDR NF1 antibody MGC104858 antibody MGC110976 antibody MGC117250 antibody NSEP 1 antibody NSEP1 antibody Nuclease sensitive element binding protein 1 antibody Nuclease-sensitive element-binding protein 1 antibody p50 antibody Q15905 antibody Y-box binding protein 1 antibody Y-box transcription factor antibody Y-box-binding protein 1 antibody YB 1 antibody YB-1 antibody YBOX1_HUMAN antibody YBX 1 antibody ybx1 antibody
Accession No.	Swiss-Prot#:P67809
Calculated MW	40kDa
Formulation	1*TBS (pH7.4), 1%BSA, 40%Glycerol. Preservative: 0.05% Sodium Azide.
Storage	Store at -20°C

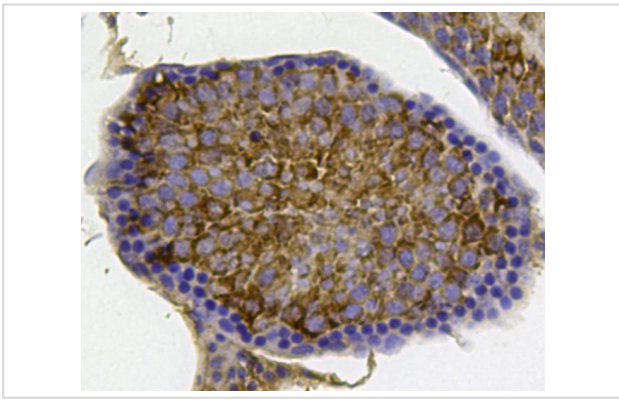
## Application Details

WB: 1:1,000 IHC: 1:50-1:200 ICC: 1:50-1:200 FC: 1:50-1:100

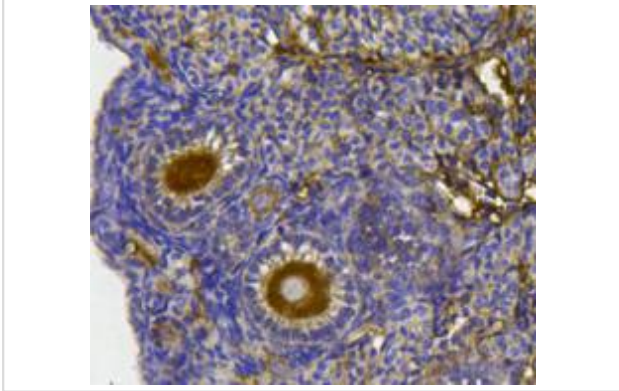
## Images



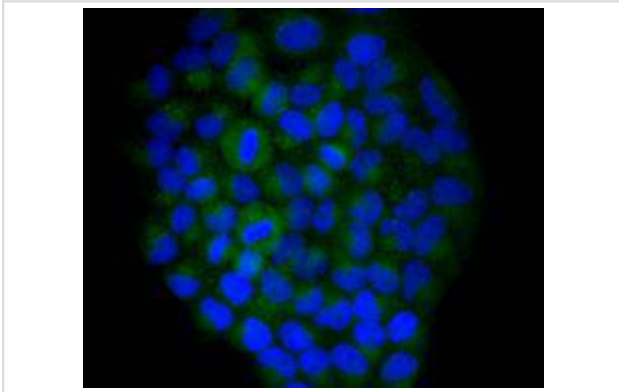
Western blot analysis on mouse testis lysates using anti-YB1 rabbit polyclonal antibody.



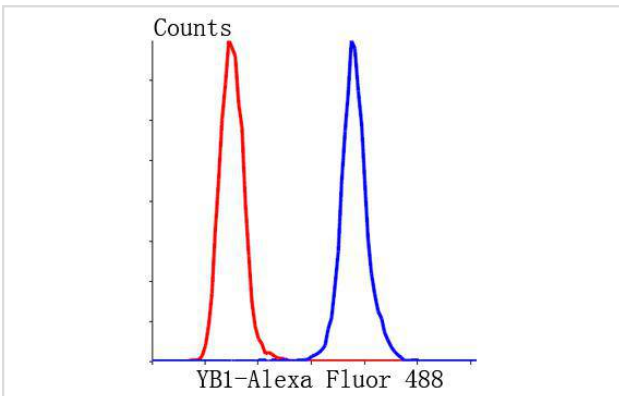
Immunohistochemical analysis of paraffin-embedded mouse testis tissue using anti-YB1 rabbit polyclonal antibody.



Immunohistochemical analysis of paraffin-embedded mouse ovary tissue using anti-YB1 rabbit polyclonal antibody.



Immunocytochemical staining of HeLa cells using anti-YB1 rabbit polyclonal antibody.



Flow cytometric analysis of HeLa cells with YB1 antibody at 1/50 dilution (blue) compared with an unlabelled control (cells without incubation with primary antibody; red). Alexa Fluor 488-conjugated Goat anti rabbit IgG was used as the secondary antibody.

## Background

MSY2 and YB-2 (MSY3,4) belong to the Y-box family of multifunctional proteins that regulate both transcription and translation. Y-box proteins interact with a wide variety of nucleic acid structures to act as transcription factors and mRNA masking proteins. The modular structure of Y-box proteins includes a highly conserved N-terminal cold-shock domain (CSD, equivalent to the bacterial cold-shock proteins) and four basic C-terminal domains containing arginine clusters and aromatic residues. MSY2 is expressed in testis and ovary where it may repress translation of parental mRNA. The gene encoding human MSY2 maps to chromosome 17p11.2-13.1. YB-2 (MSY3,4 in mouse) is also known as DNA binding protein A and is highly expressed in the testis, heart and muscle. MSY2 and YB-2 bind to the consensus sequence 5'-UCCAUCA-3' contained in the Y-box element.

## References

---

1. Chalmeley, C. et al. 2013. Systemic compensatory response to neonatal estradiol exposure does not prevent depletion of the oocyte pool in the rat. *PloS one*. 8: e82175.
2. Shi, K. et al. 2007. Advanced methods of isolation and identification of porcine primordial follicles. *Anim Reprod Sci*. 101: 163-171.

---

Note: This product is for in vitro research use only and is not intended for use in humans or animals.