

## CD11c / ITGAX Antibody

Catalog No: #48280



Package Size: #48280-1 50ul #48280-2 100ul

Orders: [order@signalwayantibody.com](mailto:order@signalwayantibody.com)Support: [tech@signalwayantibody.com](mailto:tech@signalwayantibody.com)

## Description

Product Name	CD11c / ITGAX Antibody
Host Species	Mouse
Clone No.	3G1
Purification	ProA affinity purified
Applications	WB, IP, IF, IHC(P)
Species Reactivity	Hu
Immunogen Description	peptide
Other Names	95 alpha chain antibody 95 antibody CD 11c antibody CD11 antigen like family member C antibody CD11 antigen-like family member C antibody CD11c antibody CD11c antigen antibody Complement component 3 receptor 4 subunit antibody CR4 antibody Integrin alpha X antibody Integrin alpha X chain antibody Integrin alpha-X antibody Integrin aX antibody Integrin subunit alpha X antibody integrin, alpha X (antigen CD11C (p150), alpha polypeptide) antibody integrin, alpha X (complement component 3 receptor 4 subunit antibody ITAX_HUMAN antibody ITGAX antibody LEU M5 alpha subunit antibody Leu M5 antibody Leukocyte adhesion glycoprotein p150 95 alpha chain antibody Leukocyte adhesion glycoprotein p150 antibody Leukocyte adhesion receptor p150 95 antibody Leukocyte adhesion receptor p150 antibody Leukocyte surface antigen p150 95 alpha subunit antibody Leukocyte surface antigen p150 alpha subunit antibody Myeloid membrane antigen alpha subunit antibody p150 95 integrin alpha chain antibody p150 antibody p150/95 antibody SLEB6 antibody
Accession No.	Swiss-Prot#:P20702
Calculated MW	145kDa
Formulation	1*TBS (pH7.4), 1%BSA, 40%Glycerol. Preservative: 0.05% Sodium Azide.
Storage	Store at 4°C

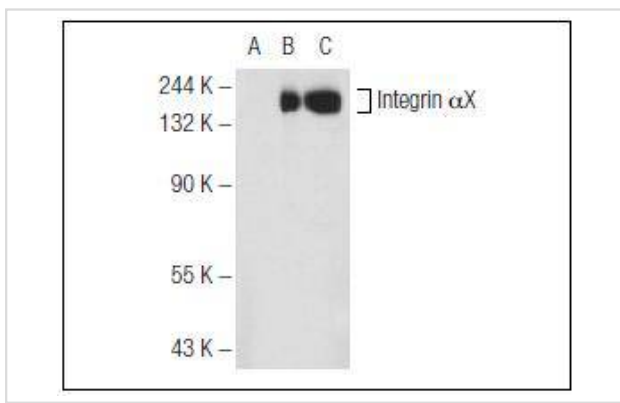
## Application Details

WB: 1:100-1:1,0000

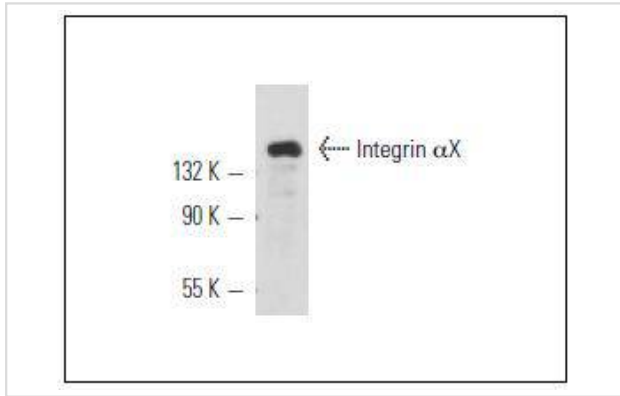
IHC: 1:50-500

IP: 1-2 &amp;mu;g per 100-500 &amp;mu;g of total protein(1 ml of cell lysate)

## Images



Western blot analysis of Integrin  $\alpha$ X expression in non-transfected 293T (A), human Integrin  $\alpha$ X transfected 293T (B) and HL-60 (C) whole cell



Western blot analysis of Integrin  $\alpha$ X expression in AML-193 whole cell lysate.

## Background

Integrin  $\alpha$ X (CD11c, leukocyte surface antigen p150,95, CR4, Axb2) is a type 1 transmembrane protein that traditionally combines with  $\beta$ 2 chain to form a leukocyte-specific integrin known as inactivated-C3b (iC3b) receptor 4 (CR4). Integrin  $\alpha$ X/ $\beta$ 2 shares similar properties of the  $\alpha$ M/ $\beta$ 2 integrin in mediating adherence of neutrophils and monocytes to stimulated endothelial cells, and in phagocytosis of complement coated particles. Abnormal expression of Integrin  $\alpha$ X is characteristic of hairy cell leukemia (HCL) and is dependent upon activation of proto-oncogenes Ras and JunD. Proteins and DNA elements that influence transcription of Integrin  $\alpha$ X include Sp1 and Sp1-like factors, AP-1 family, C/EBP, Oct-2 and PU.1. Integrin  $\alpha$ X is present on monocyte derivative dendritic cells (DCs), macrophages and NK cells. Upon activation, DCs present in skin (Langerhans cells), lining of nose, lung, stomach, intestine and blood can migrate to lymphoid tissues and interact with T and B cells to initiate and shape the immune response.

## References

1. Binder, R.J., et al. 2000. Cutting edge: heat shock protein  $\gamma$ p96 induces maturation and migration of CD11c+ cells in vivo. *J. Immunol.* 165: 6029-6035.
2. Nham, S.U. 1999. Characteristics of fibrinogen binding to the domain of CD11c, an  $\alpha$  subunit of p150,95. *Biochem. Biophys. Res. Commun.* 264: 630-634..

Note: This product is for in vitro research use only and is not intended for use in humans or animals.