

DIS3L2 Antibody

Catalog No: #48435



Package Size: #48435-1 50ul #48435-2 100ul

Orders: order@signalwayantibody.comSupport: tech@signalwayantibody.com

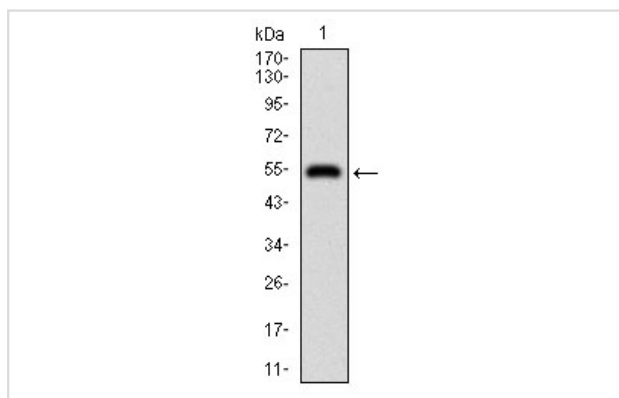
Description

Product Name	DIS3L2 Antibody
Host Species	Mouse
Clonality	Monoclonal
Clone No.	B2-C7
Purification	ProA affinity purified
Applications	WB, IHC, FC
Species Reactivity	Hu
Immunogen Description	Recombinant protein
Other Names	DI3L2_HUMAN antibody DIS3 L2 antibody DIS3 mitotic control homolog (S. cerevisiae) like 2 antibody DIS3 mitotic control homolog like 2 antibody DIS3-like exonuclease 2 antibody Dis3l2 antibody FLJ36974 antibody MGC42174 antibody
Accession No.	Swiss-Prot#:Q8IYB7
Calculated MW	100 kDa
Formulation	1*TBS (pH7.4), 1%BSA, 40%Glycerol. Preservative: 0.05% Sodium Azide.
Storage	Store at -20°C

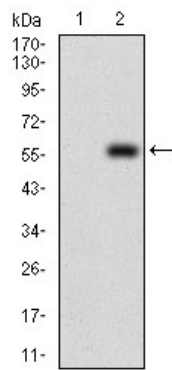
Application Details

WB: 1:500-1:1,000 IHC: 1:50-1:200FC: 1:100-1:200

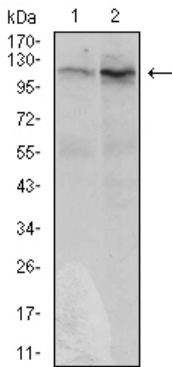
Images



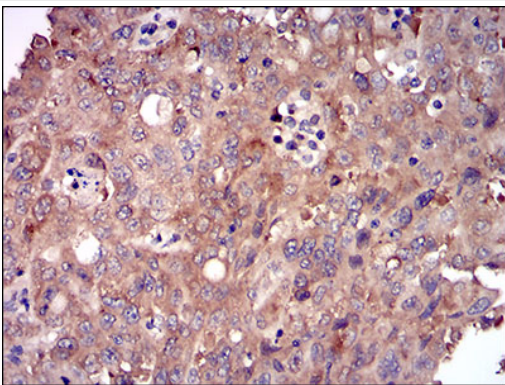
Western blot analysis of DIS3L2 on human DIS3L2 recombinant protein using anti-DIS3L2 antibody at 1/1,000 dilution.



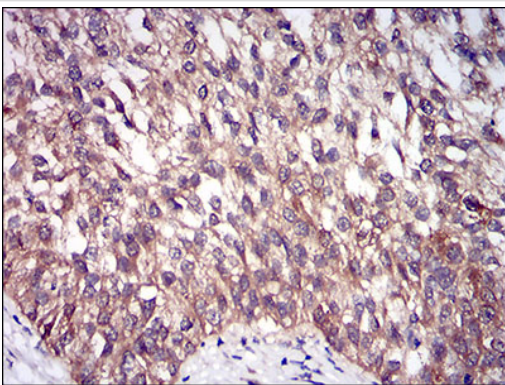
Western blot analysis of DIS3L2 on HEK293 (1) and DIS3L2-hlgGfc transfected HEK293 (2) cell lysate using anti-DIS3L2 antibody at 1/1,000 dilution.



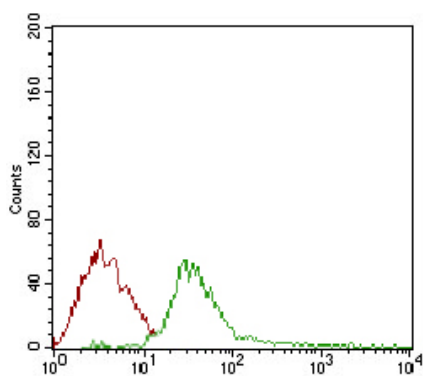
Western blot analysis of DIS3L2 on HeLa (1) and HepG2 (2) cell lysate using anti-DIS3L2 antibody at 1/1,000 dilution.



Immunohistochemical analysis of paraffin-embedded human endometrial cancer tissue using anti-DIS3L2 antibody. Counter stained with hematoxylin.



Immunohistochemical analysis of paraffin-embedded human bladder cancer tissue using anti-DIS3L2 antibody. Counter stained with hematoxylin.



Flow cytometric analysis of Jurkat cells with DIS3L2 antibody at 1/100 dilution (green) compared with an unlabelled control (cells without incubation with primary antibody; red).

Background

The exosome is a multisubunit complex composed of several highly conserved subunits, some of which are 3' to 5' exoribonucleases. The complex is involved in a variety of cellular processes and is responsible for degrading unstable mRNAs that contain AU-rich (ARE) elements in their untranslated 3' region. DIS3L2 (DIS3-like exonuclease 2) is an 885 amino acid protein that is thought to function as an exonuclease and may be required for the 3' processing of pre-mRNA into mature mRNA. Defects or chromosomal translocations involving the gene encoding DIS3L2 may be associated with Marfanoid habitus, a genetic disorder characterized by abnormalities in the skeleton, eyes and cardiovascular system. DIS3L2 is expressed as five isoforms due to alternative splicing events.

References

1. Du Toit A. Cytoskeleton: Formins induce nuclear actin assembly. *Nat Rev Mol Cell Biol* 14(6):328 (2013).
2. Astuti D et al. Germline mutations in DIS3L2 cause the Perlman syndrome of overgrowth and Wilms tumor susceptibility. *Nat Genet* 44(3):277-84 (2012).

Note: This product is for in vitro research use only and is not intended for use in humans or animals.