

## SP-B Polyclonal Antibody

Catalog No: #41453



Package Size: #41453-1 50ul #41453-2 100ul

Orders: [order@signalwayantibody.com](mailto:order@signalwayantibody.com)Support: [tech@signalwayantibody.com](mailto:tech@signalwayantibody.com)

## Description

Product Name	SP-B Polyclonal Antibody
Host Species	Rabbit
Clonality	Polyclonal
Purification	The antibody was affinity-purified from rabbit antiserum by affinity-chromatography using epitope-specific immunogen.
Applications	WBoO IHCcoO ELISA
Species Reactivity	HuoO RatoO Mouse
Specificity	SP-B Polyclonal Antibody detects endogenous levels of SP-B protein.
Immunogen Description	Synthesized peptide derived from the Internal region of human SP-B.
Target Name	SP-B
Other Names	SFTP3; SFTP3; Pulmonary surfactant-associated protein B; SP-B; 18 kDa pulmonary-surfactant protein; 6 kDa protein; Pulmonary surfactant-associated proteolipid SPL(Phe)
Accession No.	Swiss-Prot: P07988NCBI Gene ID: 6439
SDS-PAGE MW	42kd
Concentration	1mg/ml
Formulation	Liquid in PBS containing 50% glycerol, 0.5% BSA and 0.02% sodium azide.
Storage	Store at -20°C/1 year

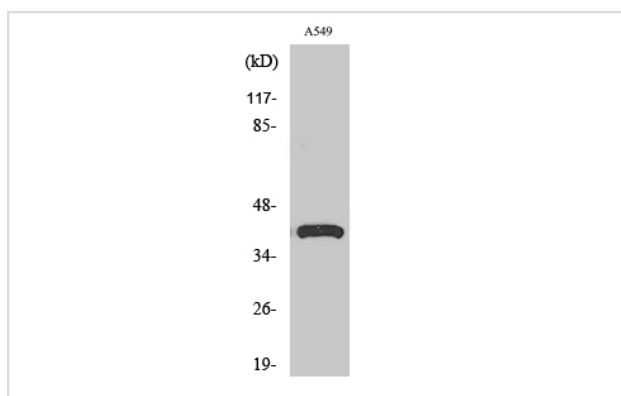
## Application Details

Western Blot: 1/500 - 1/2000. IHC 1:50-300

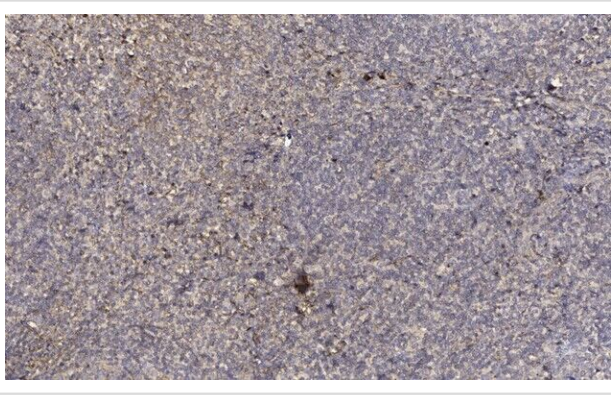
ELISA: 1/10000.

Not yet tested in other applications.

## Images



Western Blot analysis of A549 cells using SP-B Polyclonal Antibody



Immunohistochemical analysis of paraffin-embedded human tonsil. 1, Antibody was diluted at 1:200(4° overnight). 2, Tris-EDTA,pH9.0 was used for antigen retrieval. 3,Secondary antibody was diluted at 1:200(room temperature, 45min).

---

Note: This product is for in vitro research use only and is not intended for use in humans or animals.