

Stat1 Polyclonal Antibody

Catalog No: #41462



Package Size: #41462-1 50ul #41462-2 100ul

Orders: order@signalwayantibody.comSupport: tech@signalwayantibody.com

Description

Product Name	Stat1 Polyclonal Antibody
Host Species	Rabbit
Clonality	Polyclonal
Purification	The antibody was affinity-purified from rabbit antiserum by affinity-chromatography using epitope-specific immunogen.
Applications	WB IHC IP ELISA IF
Species Reactivity	Hu Ms Rt Mk
Specificity	Stat1 Polyclonal Antibody detects endogenous levels of Stat1 protein.
Immunogen Description	Synthesized peptide derived from human Stat1 around the non-phosphorylation site of Y701.
Target Name	Stat1
Other Names	STAT1; Signal transducer and activator of transcription 1-alpha/beta; Transcription factor ISGF-3 components p91/p84
Accession No.	Swiss-Prot: P42224NCBI Gene ID: 6772
SDS-PAGE MW	85kd
Concentration	1mg/ml
Formulation	Liquid in PBS containing 50% glycerol, 0.5% BSA and 0.02% sodium azide.
Storage	Store at -20°C/1 year

Application Details

Western Blot: 1/500 - 1/2000.

Immunohistochemistry: 1/100 - 1/300. Immunoprec

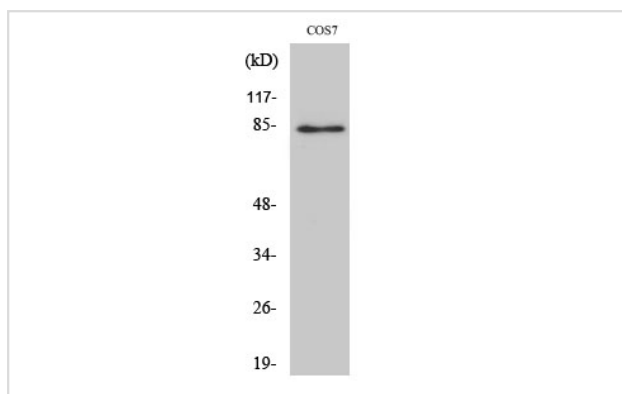
Immunoprecipitation: 2-5 ug/mg lysate.

ELISA: 1/10000.

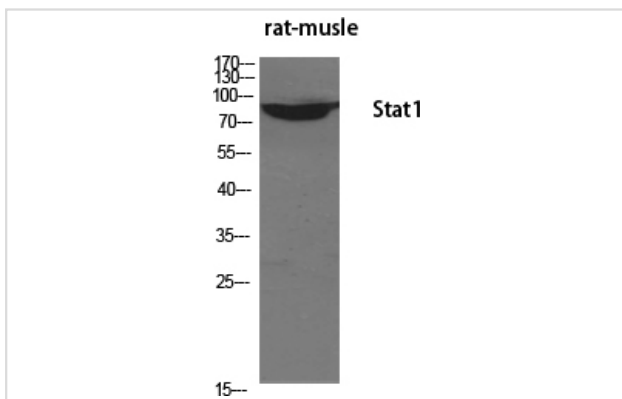
IF 1:50-200

Not yet tested in other applications.

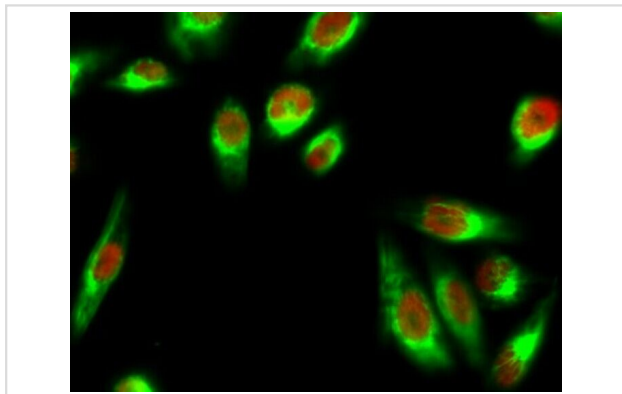
Images



Western Blot analysis of COS7 cells using Stat1 Polyclonal Antibody



Western Blot analysis of RAT-MUSCLE cells using Stat1 Polyclonal Antibody



Immunofluorescence analysis of Hela cell.

Published Papers

el at., Inhibition of TPL2 by interferon- α suppresses bladder cancer through activation of PDE4D. In J Exp Clin Cancer Res. On 2018 Nov 27 by Qiang Z, Zhou ZY et al.. PMID: 30482227, , (2018)

[PMID:30482227](#)

Note: This product is for in vitro research use only and is not intended for use in humans or animals.