

Vimentin Polyclonal Antibody

Catalog No: #41532



Package Size: #41532-1 50ul #41532-2 100ul

Orders: order@signalwayantibody.comSupport: tech@signalwayantibody.com

Description

| | |
|-----------------------|-----------------------------------------------------------------------------------------------------------------------|
| Product Name | Vimentin Polyclonal Antibody |
| Host Species | Rabbit |
| Clonality | Polyclonal |
| Purification | The antibody was affinity-purified from rabbit antiserum by affinity-chromatography using epitope-specific immunogen. |
| Applications | WB IHC IF ELISA |
| Species Reactivity | Hu |
| Specificity | Vimentin Polyclonal Antibody detects endogenous levels of Vimentin protein. |
| Immunogen Type | peptide |
| Immunogen Description | Synthesized peptide derived from human Vimentin around the non-phosphorylation site of S56. |
| Target Name | Vimentin |
| Other Names | VIM; Vimentin |
| Accession No. | Swiss-Prot: P08670NCBI Gene ID: 7431 |
| SDS-PAGE MW | 54kd |
| Concentration | 1mg/ml |
| Formulation | Liquid in PBS containing 50% glycerol, 0.5% BSA and 0.02% sodium azide. |
| Storage | Store at -20°C/1 year |

Application Details

Western Blot: 1/500 - 1/2000.

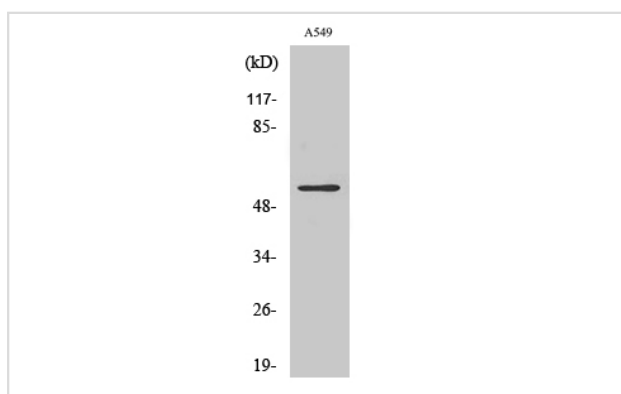
Immunohistochemistry: 1/100 - 1/300.

Immunofluorescence: 1/200 - 1/1000.

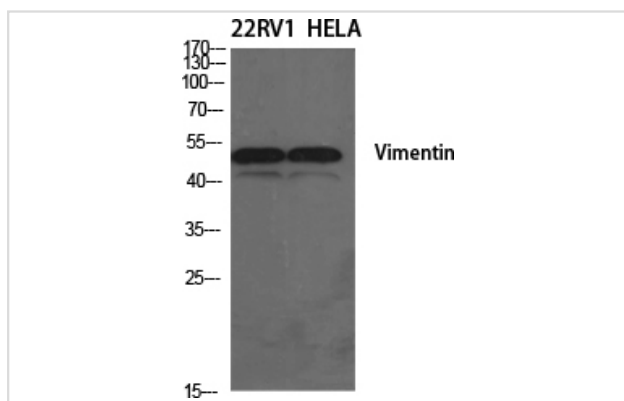
ELISA: 1/20000.

Not yet tested in other applications.

Images



Western Blot analysis of A549 cells using Vimentin Polyclonal Antibody



Western Blot analysis of 22RV1 HELA cells using Vimentin Polyclonal Antibody

Note: This product is for in vitro research use only and is not intended for use in humans or animals.