

## C3 Rabbit mAb

Catalog No: #49413

Package Size: #49413-1 50ul #49413-2 100ul

Orders: [order@signalwayantibody.com](mailto:order@signalwayantibody.com)Support: [tech@signalwayantibody.com](mailto:tech@signalwayantibody.com)

## Description

Product Name	C3 Rabbit mAb
Clone No.	JF10-30
Purification	Affinity-chromatography
Applications	WB, ICC/IF, FC
Species Reactivity	Hu
Immunogen Description	A synthesized peptide derived from human Complement C3
Other Names	Acylation stimulating protein cleavage product antibody AHUS5 antibody ARMD9 antibody ASP antibody C3 and PZP like alpha 2 macroglobulin domain containing protein 1 antibody C3 and PZP-like alpha-2-macroglobulin domain-containing protein 1 antibody C3 antibody CO3_HUMAN antibody Complement C3 antibody Complement C3c alpha" chain fragment 2 antibody Complement component 3 antibody Complement factor 3 antibody CPAMD1 antibody HEL S 62p antibody
Accession No.	Swiss-Prot#:P01024
Calculated MW	187 kDa
Formulation	Rabbit IgG in 10mM phosphate buffered saline , pH 7.4, 150mM sodium chloride, 0.05% BSA, 0.02% sodium azide and 50% glycerol.
Storage	Store at +4°C for short term. Store at -20°C for long term. Avoid freeze/thaw cycle.

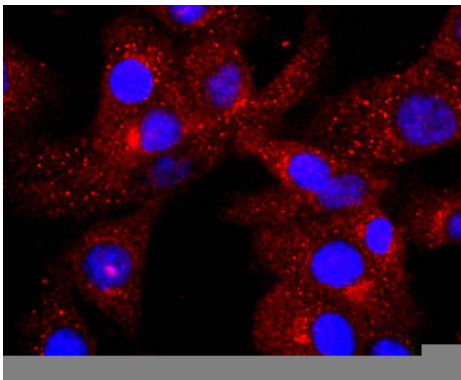
## Application Details

WB 1:1000-1:2000

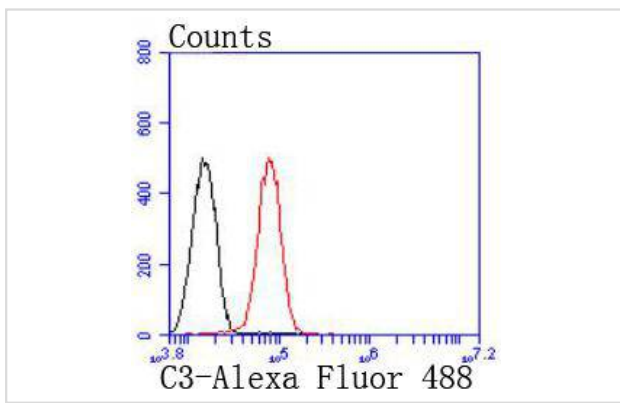
ICC/IF 1:50-1:200

FC 1:20-1:100

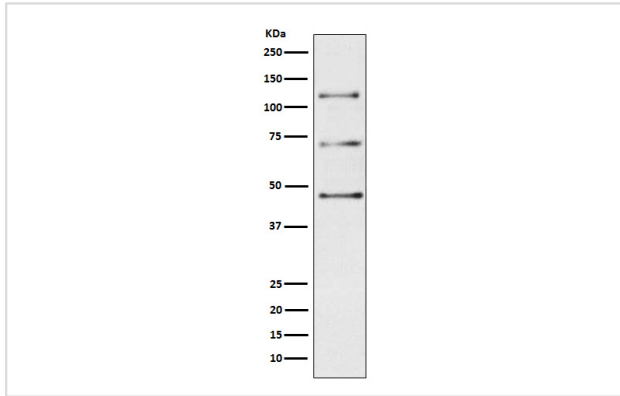
## Images



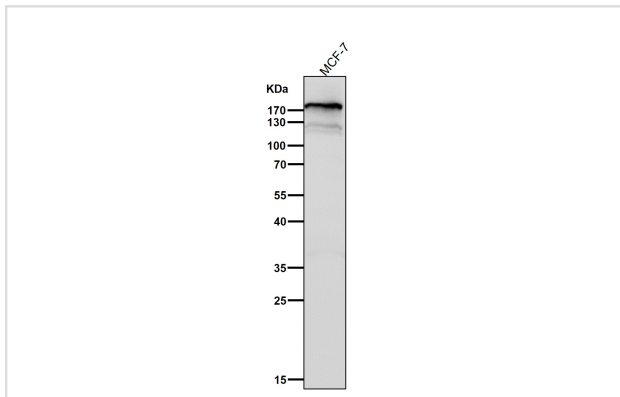
ICC staining C3 in NIH/3T3 cells (red). The nuclear counter stain is DAPI (blue). Cells were fixed in paraformaldehyde, permeabilised with 0.25% Triton X100/PBS.



Flow cytometric analysis of HepG2 cells with C3 antibody at 1/50 dilution (red) compared with an unlabelled control (cells without incubation with primary antibody; black). Alexa Fluor 488-conjugated goat anti rabbit IgG was used as the secondary antibody



Western blot analysis of C3 / C3a expression in Human plasma lysate.



All lanes use the Antibody at 1:2K dilution for 1 hour at room temperature.

## Background

C3 plays a central role in the activation of the complement system. Its processing by C3 convertase is the central reaction in both classical and alternative complement pathways. After activation C3b can bind covalently, via its reactive thioester, to cell surface carbohydrates or immune aggregates.

## References

1. Murayama MA et al. CTRP6 is an endogenous complement regulator that can effectively treat induced arthritis. *Nat Commun* 6:8483 (2015).
2. Lee MS et al. Exploitation of the complement system by oncogenic Kaposi's sarcoma-associated herpesvirus for cell survival and persistent infection. *PLoS Pathog* 10:e1004412 (2014).

Note: This product is for in vitro research use only and is not intended for use in humans or animals.