

## LIF Polyclonal Antibody

Catalog No: #41551



Package Size: #41551-1 50ul #41551-2 100ul

Orders: [order@signalwayantibody.com](mailto:order@signalwayantibody.com)Support: [tech@signalwayantibody.com](mailto:tech@signalwayantibody.com)

## Description

Product Name	LIF Polyclonal Antibody
Host Species	Rabbit
Clonality	Polyclonal
Purification	The antibody was affinity-purified from rabbit antiserum by affinity-chromatography using epitope-specific immunogen.
Applications	WB ELISA
Species Reactivity	Hu
Specificity	LIF Polyclonal Antibody detects endogenous levels of LIF protein.
Immunogen Type	peptide
Immunogen Description	Synthesized peptide derived from the C-terminal region of human LIF.
Target Name	LIF
Other Names	LIF; HILDA; Leukemia inhibitory factor; LIF; Differentiation-stimulating factor; D factor; Melanoma-derived LPL inhibitor; MLPLI; Emfilermin
Accession No.	Swiss-Prot: P15018NCBI Gene ID: 3976
SDS-PAGE MW	25kd
Concentration	1mg/ml
Formulation	Liquid in PBS containing 50% glycerol, 0.5% BSA and 0.02% sodium azide.
Storage	Store at -20°C/1 year

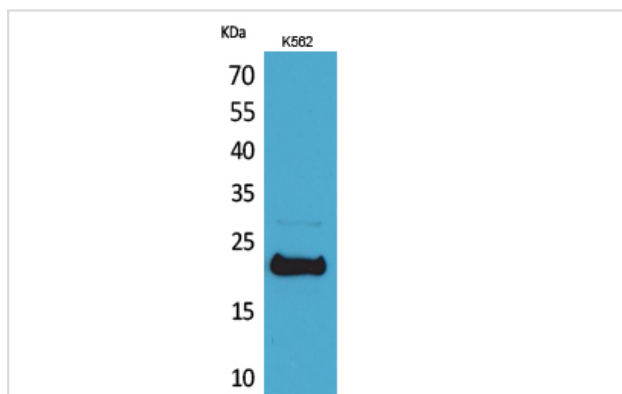
## Application Details

Western Blot: 1/500 - 1/2000.

ELISA: 1/20000.

Not yet tested in other applications.

## Images



Western Blot analysis of K562 cells using LIF Polyclonal Antibody

---

Note: This product is for in vitro research use only and is not intended for use in humans or animals.