

Cyclophilin D Polyclonal Antibody

Catalog No: #41559

Package Size: #41559-1 50ul #41559-2 100ul

Orders: order@signalwayantibody.comSupport: tech@signalwayantibody.com

Description

Product Name	Cyclophilin D Polyclonal Antibody
Host Species	Rabbit
Clonality	Polyclonal
Purification	The antibody was affinity-purified from rabbit antiserum by affinity-chromatography using epitope-specific immunogen.
Applications	WB ELISA
Species Reactivity	Hu Ms Rt
Specificity	Cyclophilin D Polyclonal Antibody detects endogenous levels of Cyclophilin D protein.
Immunogen Type	peptide
Immunogen Description	Synthesized peptide derived from the C-terminal region of human Cyclophilin D.
Target Name	Cyclophilin D
Other Names	PPID; CYP40; CYPD; Peptidyl-prolyl cis-trans isomerase D; PPIase D; 40 kDa peptidyl-prolyl cis-trans isomerase; Cyclophilin-40; CYP-40; Cyclophilin-related protein; Rotamase D
Accession No.	Swiss-Prot: Q08752NCBI Gene ID: 5481
SDS-PAGE MW	40kd
Concentration	1mg/ml
Formulation	Liquid in PBS containing 50% glycerol, 0.5% BSA and 0.02% sodium azide.
Storage	Store at -20°C/1 year

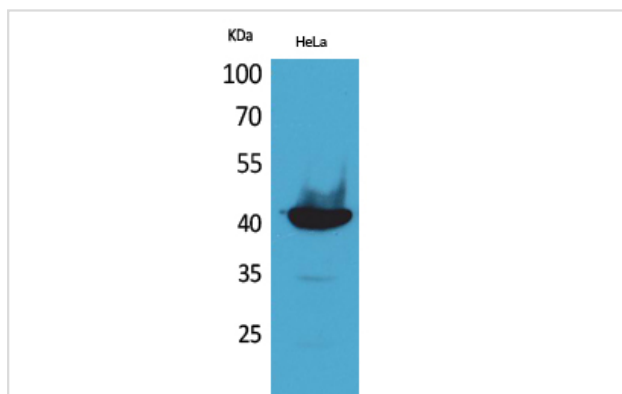
Application Details

Western Blot: 1/500 - 1/2000.

ELISA: 1/20000.

Not yet tested in other applications.

Images



Western Blot analysis of HeLa cells using Cyclophilin D Polyclonal Antibody

Published Papers

el at., T 2 toxin cytotoxicity mediated by directly perturbing mitochondria in human gastric epithelium GES 1 cells.In J Appl Toxicol on 2020 Mar 18. by Su N, Liu CL, et al..PMID:32187393, , (2020)

[PMID:32187393](#)

Note: This product is for in vitro research use only and is not intended for use in humans or animals.