

IP3 Receptor Rabbit mAb

Catalog No: #49582

Package Size: #49582-1 50ul #49582-2 100ul

Orders: order@signalwayantibody.comSupport: tech@signalwayantibody.com

Description

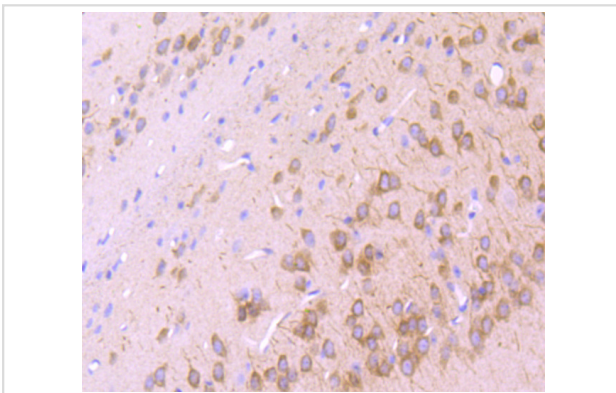
Product Name	IP3 Receptor Rabbit mAb
Clone No.	JA11-35
Purification	ProA affinity purified
Applications	WB, IHC
Species Reactivity	Hu, Ms, Rt
Immunogen Description	recombinant protein
Other Names	4 antibody 5-trisphosphate receptor antibody 5-trisphosphate receptor type 1 antibody DKFZp313E1334 antibody DKFZp313N1434 antibody inositol 1 4 5 triphosphate receptor type 1 antibody Inositol 1 4 5 trisphosphate Receptor Type 1 antibody Inositol 1 antibody InsP3R1 antibody IP3 antibody IP3 receptor antibody IP3 receptor isoform 1 antibody IP3R 1 antibody IP3R antibody IP3R1 antibody ITPR 1 antibody Itpr1 antibody ITPR1_HUMAN antibody SCA15 antibody SCA16 antibody SCA29 antibody Type 1 inositol 1 4 5 trisphosphate receptor antibody Type 1 inositol 1 antibody Type 1 InsP3 receptor antibody
Accession No.	Swiss-Prot#:Q14643
Calculated MW	314 kDa
Formulation	1*TBS (pH7.4), 1%BSA, 40%Glycerol. Preservative: 0.05% Sodium Azide.
Storage	Store at -20°C

Application Details

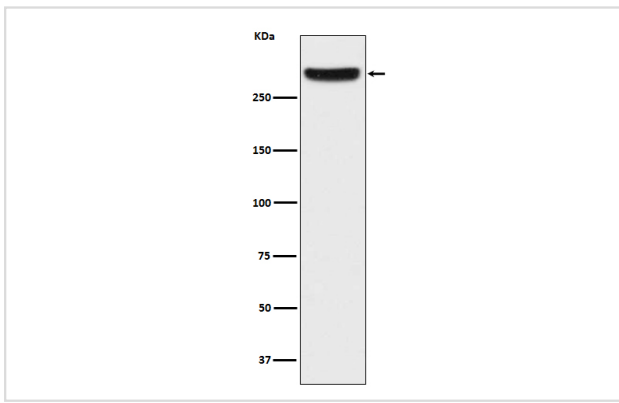
WB: 1:500

IHC: 1:50-1:200

Images



Immunohistochemical analysis of paraffin-embedded mouse hippocampus tissue using anti-IP3 Receptor antibody. Counter stained with hematoxylin.



Western blot analysis of IP3 Receptor expression in HeLa cell lysate.

Background

Intracellular channel that mediates calcium release from the endoplasmic reticulum following stimulation by inositol 1,4,5-trisphosphate. Involved in the regulation of epithelial secretion of electrolytes and fluid through the interaction with AHCYL1. Plays a role in ER stress-induced apoptosis. Cytoplasmic calcium released from the ER triggers apoptosis by the activation of CaM kinase II, eventually leading to the activation of downstream apoptosis pathways.

Note: This product is for in vitro research use only and is not intended for use in humans or animals.