

CD66e Polyclonal Antibody

Catalog No: #41581



Package Size: #41581-1 50ul #41581-2 100ul

Orders: order@signalwayantibody.comSupport: tech@signalwayantibody.com

Description

Product Name	CD66e Polyclonal Antibody
Host Species	Rabbit
Clonality	Polyclonal
Purification	The antibody was affinity-purified from rabbit antiserum by affinity-chromatography using epitope-specific immunogen.
Applications	WB;IHC;IF;ELISA
Species Reactivity	Human;Rat;Mouse;
Specificity	CD66e Polyclonal Antibody detects endogenous levels of CD66e protein.
Immunogen Description	Synthesized peptide derived from the Internal region of human CD66e.
Target Name	CD66e
Other Names	CEACAM5; CEA; Carcinoembryonic antigen-related cell adhesion molecule 5; Carcinoembryonic antigen; CEA; Meconium antigen 100; CD66e
Accession No.	Swiss-Prot: P06731NCBI Gene ID: 1048
SDS-PAGE MW	76kd
Concentration	1mg/ml
Formulation	Liquid in PBS containing 50% glycerol, 0.5% BSA and 0.02% sodium azide.
Storage	Store at -20°C/1 year

Application Details

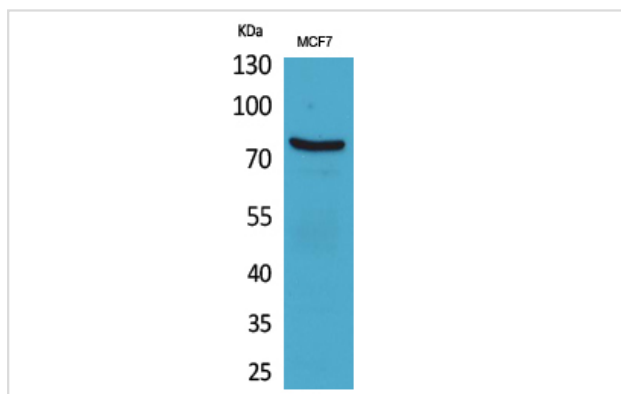
WB 1:500 - 1:2000.

IHC: 1:100-300

ELISA: 1:20000..

IF 1:50-200

Images



Western Blot analysis of MCF7 cells using CD66e Polyclonal Antibody

Note: This product is for in vitro research use only and is not intended for use in humans or animals.