

## Cytokeratin 14 Polyclonal Antibody

Catalog No: #41582



Package Size: #41582-1 50ul #41582-2 100ul

Orders: [order@signalwayantibody.com](mailto:order@signalwayantibody.com)Support: [tech@signalwayantibody.com](mailto:tech@signalwayantibody.com)

## Description

Product Name	Cytokeratin 14 Polyclonal Antibody
Host Species	Rabbit
Clonality	Polyclonal
Purification	The antibody was affinity-purified from rabbit antiserum by affinity-chromatography using epitope-specific immunogen.
Applications	WB ELISA IHC $\alpha$ O IF
Species Reactivity	Hu Ms Rt
Specificity	Cytokeratin 14 Polyclonal Antibody detects endogenous levels of Cytokeratin 14 protein.
Immunogen Description	Synthesized peptide derived from the C-terminal region of human Cytokeratin 14.
Target Name	Cytokeratin 14
Other Names	KRT14; Keratin, type I cytoskeletal 14; Cytokeratin-14; CK-14; Keratin-14; K14
Accession No.	Swiss-Prot: P02533NCBI Gene ID: 3861
SDS-PAGE MW	53kd
Concentration	1mg/ml
Formulation	Liquid in PBS containing 50% glycerol, 0.5% BSA and 0.02% sodium azide.
Storage	Store at -20°C/1 year

## Application Details

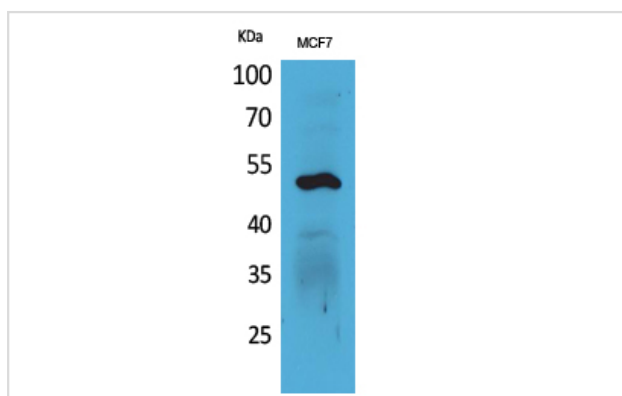
Western Blot: 1/500 - 1/2000.

IHC: 1:100-300

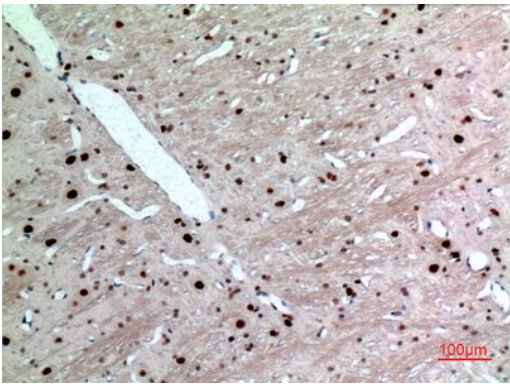
ELISA: 1/20000.

Not yet tested in other applications.

## Images



Western Blot analysis of MCF7 cells using Cytokeratin 14 Polyclonal Antibody



Immunohistochemical analysis of paraffin-embedded rat-brain, antibody was diluted at 1:100

## Published Papers

el at., Synaptodin-2 promotes hepatocellular carcinoma metastasis via calcineurin-induced nuclear-cytoplasmic translocation. In *Cancer Lett* on 2020 Jul 10 by Gao J, Zhang HP, et al.. PMID:32278815, , (2020)

[PMID:32278815](#)

Note: This product is for in vitro research use only and is not intended for use in humans or animals.