

## CXCR5 Rabbit mAb

Catalog No: #49855

Package Size: #49855-1 50ul #49855-2 100ul

Orders: [order@signalwayantibody.com](mailto:order@signalwayantibody.com)Support: [tech@signalwayantibody.com](mailto:tech@signalwayantibody.com)

## Description

Product Name	CXCR5 Rabbit mAb
Clone No.	JB11-40
Purification	Affinity-chromatography
Applications	WB,IHC,FC
Species Reactivity	Hu, Ms, Rt
Immunogen Description	A synthesized peptide derived from human CXCR5
Other Names	BLR 1 antibody BLR1 antibody Burkitt lymphoma receptor 1 antibody Burkitt lymphoma receptor 1 GTP binding protein antibody Burkitt lymphoma receptor 1, GTP binding protein (chemokine (C-X-C motif) receptor 5) antibody C X C chemokine receptor type 5 antibody C-X-C chemokine receptor type 5 antibody CD 185 antibody CD185 antibody CD185 antigen antibody Chemokine (C-X-C motif) receptor 5 antibody Chemokine C X C motif receptor 5 antibody Chemokine CXC motif receptor 5 antibody Chemokine receptor 5 antibody CXC chemokine receptor type 5 antibody CXC R5 antibody CXC-R5 antibody CXCR 5 antibody CXCR-5 antibody Cxcr5 antibody CXCR5_HUMAN antibody MDR 15 antibody MDR-15 antibody MDR15 antibody MGC117347 antibody Monocyte derived receptor 15 antibody Monocyte-derived receptor 15 antibody
Accession No.	Swiss-Prot#:P32302
Calculated MW	42 kDa
Formulation	Rabbit IgG in 10mM phosphate buffered saline , pH 7.4, 150mM sodium chloride, 0.05% BSA, 0.02% sodium azide and 50% glycerol.
Storage	Store at +4°C for short term. Store at -20°C for long term. Avoid freeze/thaw cycle.

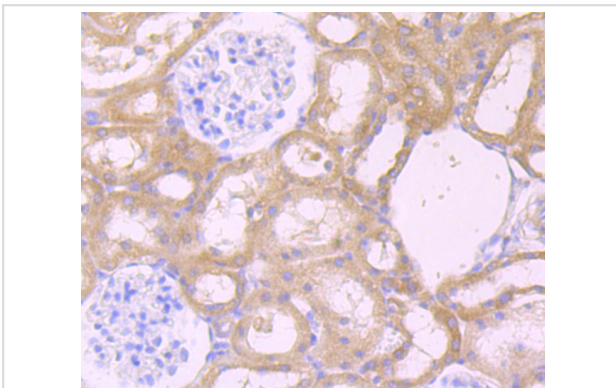
## Application Details

WB: 1:500-1:1,000

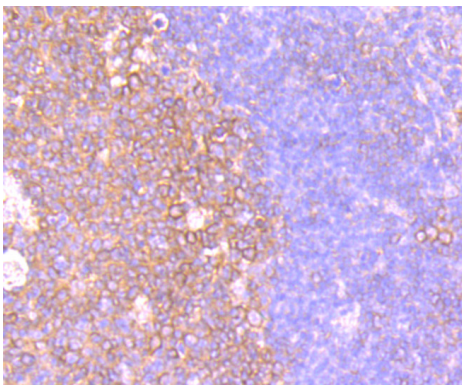
IHC: 1:50-1:200

FC: 1:50-1:100

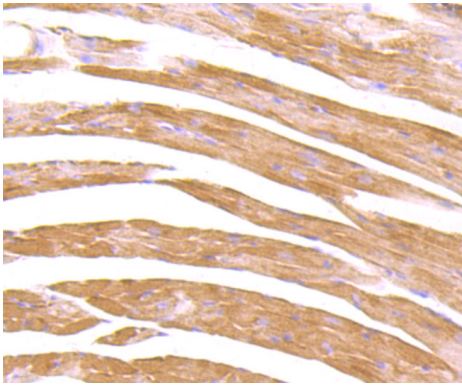
## Images



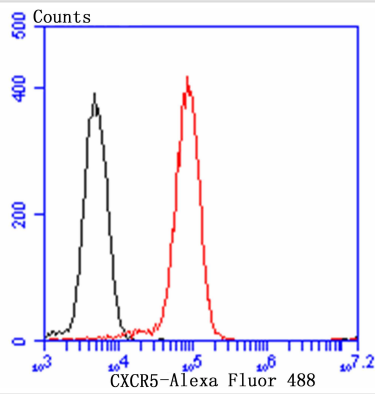
Immunohistochemical analysis of paraffin-embedded rat kidney tissue using anti-CXCR5 antibody. Counter stained with hematoxylin.



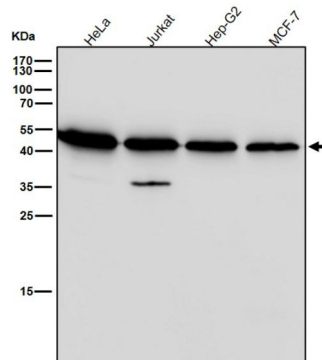
Immunohistochemical analysis of paraffin-embedded human tonsil tissue using anti-CXCR5 antibody. Counter stained with hematoxylin.



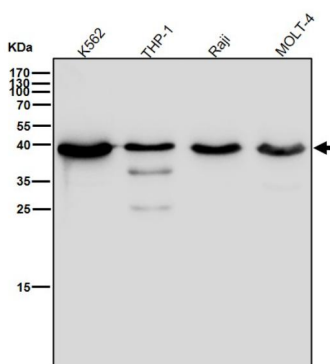
Immunohistochemical analysis of paraffin-embedded mouse heart tissue using anti-CXCR5 antibody. Counter stained with hematoxylin.



Flow cytometric analysis of Daudi cells with CXCR5 antibody at 1/100 dilution (red) compared with an unlabelled control (cells without incubation with primary antibody; black). Alexa Fluor 488-conjugated goat anti-rabbit IgG was used as the secondary antibody.



All lanes use the Antibody at 1:1K dilution for 1 hour at room temperature.



All lanes use the Antibody at 1:1K dilution for 1 hour at room temperature.

## Background

---

Cytokine receptor that binds to B-lymphocyte chemoattractant (BLC). Involved in B-cell migration into B-cell follicles of spleen and Peyer patches but not into those of mesenteric or peripheral lymph nodes. May have a regulatory function in Burkitt lymphoma (BL) lymphomagenesis and/or B-cell differentiation.

## References

---

1. Sjoebloom T et al. The consensus coding sequences of human breast and colorectal cancers. *Science* 314:268-274 (2006).
2. Barella L et al. Sequence variation of a novel heptahelical leucocyte receptor through alternative transcript formation. *Biochem J* 309:773-779 (1995).

---

Note: This product is for in vitro research use only and is not intended for use in humans or animals.