

CyPA Polyclonal Antibody

Catalog No: #41606



Package Size: #41606-1 50ul #41606-2 100ul

Orders: order@signalwayantibody.com

Support: tech@signalwayantibody.com

Description

Product Name	CyPA Polyclonal Antibody
Host Species	Rabbit
Clonality	Polyclonal
Purification	The antibody was affinity-purified from rabbit antiserum by affinity-chromatography using epitope-specific immunogen.
Applications	WB ELISA IHC IF
Species Reactivity	Hu Ms Rt
Specificity	CyPA Polyclonal Antibody detects endogenous levels of CyPA protein.
Immunogen Description	Synthesized peptide derived from the Internal region of human CyPA.
Target Name	CyPA
Other Names	PPIA; CYPA; Peptidyl-prolyl cis-trans isomerase A; PPIase A; Cyclophilin A; Cyclosporin A-binding protein; Rotamase A
Accession No.	Swiss-Prot: P62937NCBI Gene ID: 5478
SDS-PAGE MW	18kd
Concentration	1mg/ml
Formulation	Liquid in PBS containing 50% glycerol, 0.5% BSA and 0.02% sodium azide.
Storage	Store at -20°C/1 year

Application Details

Western Blot: 1/500 - 1/2000.

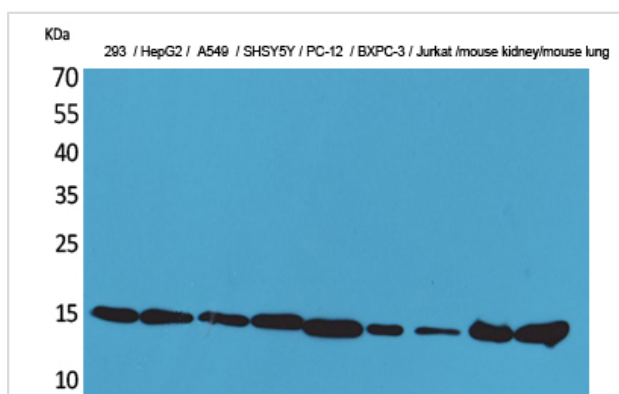
ELISA: 1/20000.

IHC-p: 1:100-300

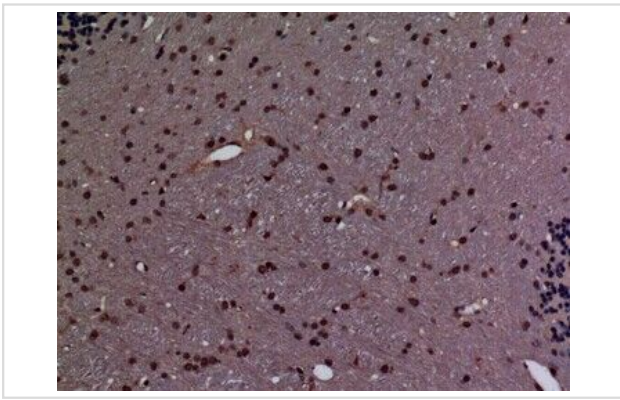
IF 1:50-200

Not yet tested in other applications.

Images



Western Blot analysis of 293 HepG2 A549 SHSY5Y PC-12 BXPC-3 Jurkat mouse kidney mouse lung cells using CyPA Polyclonal Antibody



Immunohistochemical analysis of paraffin-embedded rat-brain, antibody was diluted at 1:100

Note: This product is for in vitro research use only and is not intended for use in humans or animals.