

CYP11B1/2 Polyclonal Antibody

Catalog No: #41632

Package Size: #41632-1 50ul #41632-2 100ul

Orders: order@signalwayantibody.comSupport: tech@signalwayantibody.com

Description

Product Name	CYP11B1/2 Polyclonal Antibody
Host Species	Rabbit
Clonality	Polyclonal
Purification	The antibody was affinity-purified from rabbit antiserum by affinity-chromatography using epitope-specific immunogen.
Applications	WB ELISA
Species Reactivity	Hu
Specificity	CYP11B1/2 Polyclonal Antibody detects endogenous levels of CYP11B1/2 protein.
Immunogen Type	peptide
Immunogen Description	Synthesized peptide derived from the N-terminal region of human CYP11B1/2.
Target Name	CYP11B1/2
Other Names	CYP11B1; S11BH; Cytochrome P450 11B1, mitochondrial; CYPXIB1; Cytochrome P-450c11; Cytochrome P450C11; Steroid 11-beta-hydroxylase; CYP11B2;
Accession No.	Swiss-Prot: P15538NCBI Gene ID: 1584
SDS-PAGE MW	58kd
Concentration	1mg/ml
Formulation	Liquid in PBS containing 50% glycerol, 0.5% BSA and 0.02% sodium azide.
Storage	Store at -20°C/1 year

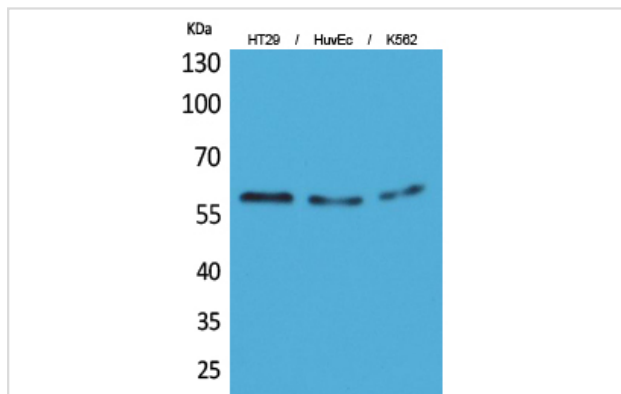
Application Details

Western Blot: 1/500 - 1/2000.

ELISA: 1/20000.

Not yet tested in other applications.

Images



Western Blot analysis of HT29 HuvEc K562 cells using CYP11B1/2 Polyclonal Antibody

Published Papers

el et al., Integration of Transcriptomic and Metabolomic Data Reveals Enhanced Steroid Hormone Biosynthesis in Mouse Uterus During Decidualization. In Proteomics on 2017 Oct by Ji-Long Liu, Wen-Qian Zhang, et al.. PMID: 28857456, , (2017)

[PMID:28857456](#)

Note: This product is for in vitro research use only and is not intended for use in humans or animals.