

## RUNX2 Polyclonal Antibody

Catalog No: #41746



Package Size: #41746-1 50ul #41746-2 100ul

Orders: [order@signalwayantibody.com](mailto:order@signalwayantibody.com)Support: [tech@signalwayantibody.com](mailto:tech@signalwayantibody.com)

## Description

Product Name	RUNX2 Polyclonal Antibody
Host Species	Rabbit
Clonality	Polyclonal
Purification	The antibody was affinity-purified from rabbit antiserum by affinity-chromatography using epitope-specific immunogen.
Applications	WB ELISA
Species Reactivity	Hu Ms Rt
Specificity	RUNX2 Polyclonal Antibody detects endogenous levels of RUNX2 protein.
Immunogen Type	peptide
Immunogen Description	Synthesized peptide derived from the Internal region of human RUNX2.
Target Name	RUNX2
Other Names	RUNX2; AML3; CBFA1; OSF2; PEBP2A; Runt-related transcription factor 2; Acute myeloid leukemia 3 protein; Core-binding factor subunit alpha-1; CBF-alpha-1; Oncogene AML-3
Accession No.	Swiss-Prot: Q13950NCBI Gene ID: 860
SDS-PAGE MW	56kd
Concentration	1mg/ml
Formulation	Liquid in PBS containing 50% glycerol, 0.5% BSA and 0.02% sodium azide.
Storage	Store at -20°C/1 year

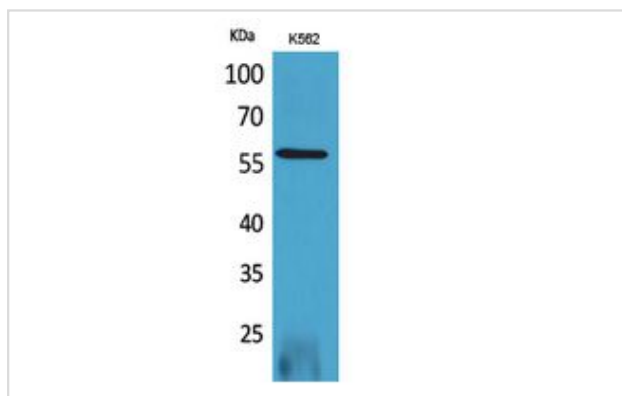
## Application Details

Western Blot: 1/500 - 1/2000.

ELISA: 1/20000.

Not yet tested in other applications.

## Images



Western Blot analysis of K562 cells using RUNX2 Polyclonal Antibody.

## Published Papers

---

el et al., 3D printed pore morphology mediates bone marrow stem cell behaviors via RhoA/ROCK2 signaling pathway for accelerating bone regenerationInBioact MaterOn2023 Mar 20byQiji Lu 1 2 3, Jingjing Diao et al..PMID: 36969106, , (2023)

[PMID:36969106](#)

---

---

Note: This product is for in vitro research use only and is not intended for use in humans or animals.