

L-Selectin Polyclonal Antibody

Catalog No: #41757



Package Size: #41757-1 50ul #41757-2 100ul

Orders: order@signalwayantibody.comSupport: tech@signalwayantibody.com

Description

Product Name	L-Selectin Polyclonal Antibody
Host Species	Rabbit
Clonality	Polyclonal
Purification	The antibody was affinity-purified from rabbit antiserum by affinity-chromatography using epitope-specific immunogen.
Applications	WB ELISA
Species Reactivity	Hu Ms Rt
Specificity	L-Selectin Polyclonal Antibody detects endogenous levels of L-Selectin protein.
Immunogen Type	peptide
Immunogen Description	Synthesized peptide derived from the Internal region of human L-Selectin.
Target Name	L-Selectin
Other Names	SELL; LNHR; LYAM1; L-selectin; CD62 antigen-like family member L; Leukocyte adhesion molecule 1; LAM-1; Leukocyte surface antigen Leu-8; Leukocyte-endothelial cell adhesion molecule 1; LECAM1; Lymph node homing receptor; TQ1; gp90-MEL; CD62L
Accession No.	Swiss-Prot: P14151NCBI Gene ID: 6402
SDS-PAGE MW	42kd
Concentration	1mg/ml
Formulation	Liquid in PBS containing 50% glycerol, 0.5% BSA and 0.02% sodium azide.
Storage	Store at -20°C/1 year

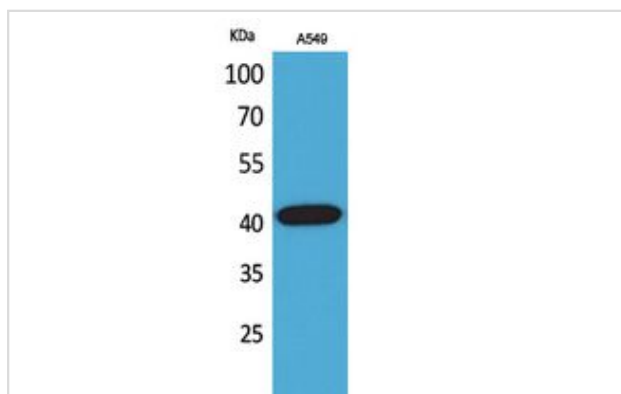
Application Details

Western Blot: 1/500 - 1/2000.

ELISA: 1/20000.

Not yet tested in other applications.

Images



Western Blot analysis of A549 cells using L-Selectin Polyclonal Antibody.

Note: This product is for in vitro research use only and is not intended for use in humans or animals.