

# Laminin $\gamma$ -2 Polyclonal Antibody

Catalog No: #41766

Package Size: #41766-1 50ul #41766-2 100ul

Orders: [order@signalwayantibody.com](mailto:order@signalwayantibody.com)Support: [tech@signalwayantibody.com](mailto:tech@signalwayantibody.com)

## Description

Product Name	Laminin $\gamma$ -2 Polyclonal Antibody
Host Species	Rabbit
Clonality	Polyclonal
Purification	The antibody was affinity-purified from rabbit antiserum by affinity-chromatography using epitope-specific immunogen.
Applications	WB;IHC;IF;ELISA
Species Reactivity	Human;Rat
Specificity	Laminin $\gamma$ -2 Polyclonal Antibody detects endogenous levels of Laminin $\gamma$ -2 protein.
Immunogen Description	Synthesized peptide derived from the C-terminal region of human Laminin $\gamma$ -2.
Target Name	Laminin $\gamma$ -2
Other Names	LAMC2; LAMB2T; LAMNB2; Laminin subunit gamma-2; Cell-scattering factor 140 kDa subunit; CSF 140 kDa subunit; Epiligrin subunit gamma; Kalinin subunit gamma; Kalinin/nicein/epiligrin 100 kDa subunit
Accession No.	Swiss-Prot: Q13753NCBI Gene ID: 3918
SDS-PAGE MW	135kd
Concentration	1mg/ml
Formulation	Liquid in PBS containing 50% glycerol, 0.5% BSA and 0.02% sodium azide.
Storage	Store at -20°C/1 year

## Application Details

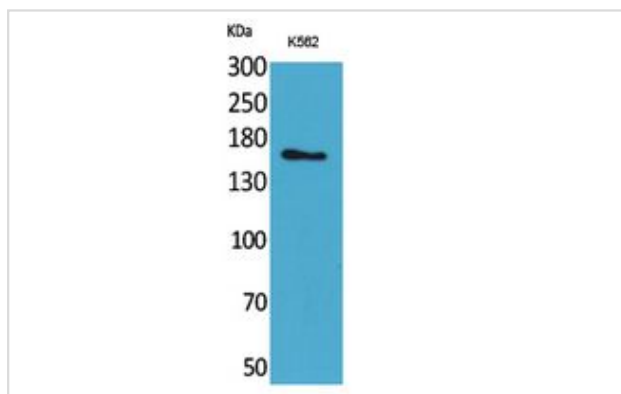
WB 1:500 - 1:2000.

IHC: 1:100-1:300.

ELISA: 1:20000..

IF 1:50-200

## Images



Western Blot analysis of K562 cells using Laminin  $\gamma$ -2 Polyclonal Antibody.

---

Note: This product is for in vitro research use only and is not intended for use in humans or animals.