

Bonzo Polyclonal Antibody

Catalog No: #41783

Package Size: #41783-1 50ul #41783-2 100ul

Orders: order@signalwayantibody.comSupport: tech@signalwayantibody.com

Description

Product Name	Bonzo Polyclonal Antibody
Host Species	Rabbit
Clonality	Polyclonal
Purification	The antibody was affinity-purified from rabbit antiserum by affinity-chromatography using epitope-specific immunogen.
Applications	WB ELISA IHC IF
Species Reactivity	Hu Ms Rt
Specificity	Bonzo Polyclonal Antibody detects endogenous levels of Bonzo protein.
Immunogen Description	Synthesized peptide derived from the N-terminal region of human Bonzo.
Target Name	Bonzo
Other Names	CXCR6; BONZO; STRL33; TYMSTR; C-X-C chemokine receptor type 6; CXC-R6; CXCR-6; CDw186; G-protein coupled receptor STRL33; G-protein coupled receptor bonzo; CD186
Accession No.	Swiss-Prot: O00574NCBI Gene ID: 10663
SDS-PAGE MW	39kd
Concentration	1mg/ml
Formulation	Liquid in PBS containing 50% glycerol, 0.5% BSA and 0.02% sodium azide.
Storage	Store at -20°C/1 year

Application Details

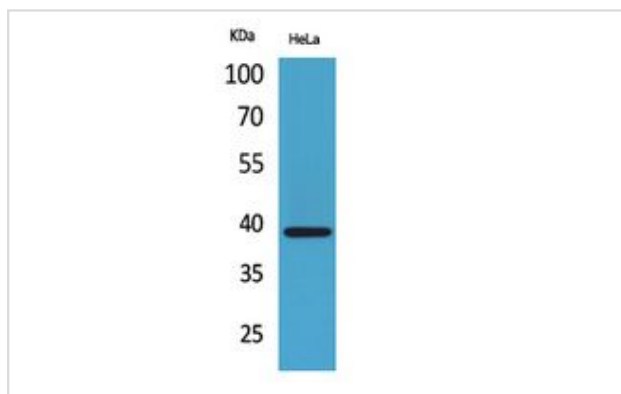
Western Blot: 1/500 - 1/2000.

IHC-p: 1:100-1:300. IF 1:50-200

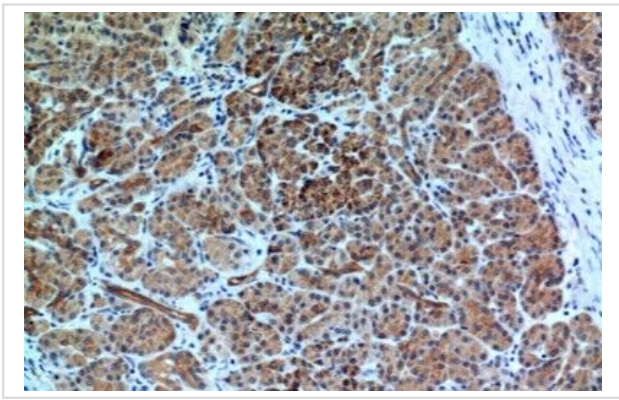
ELISA: 1/20000.

Not yet tested in other applications.

Images



Western Blot analysis of HeLa cells using Bonzo Polyclonal Antibody.



Immunohistochemical analysis of paraffin-embedded human-pancreas, antibody was diluted at 1:100

Note: This product is for in vitro research use only and is not intended for use in humans or animals.