

## CD3-ε Polyclonal Antibody

Catalog No: #41832

Package Size: #41832-1 50ul #41832-2 100ul

Orders: [order@signalwayantibody.com](mailto:order@signalwayantibody.com)Support: [tech@signalwayantibody.com](mailto:tech@signalwayantibody.com)

## Description

Product Name	CD3-ε Polyclonal Antibody
Host Species	Rabbit
Clonality	Polyclonal
Purification	The antibody was affinity-purified from rabbit antiserum by affinity-chromatography using epitope-specific immunogen.
Applications	WB <sup>o</sup> ELISA <sup>o</sup> IHC <sup>o</sup> IF
Species Reactivity	Hu <sup>o</sup> Ra <sup>o</sup> Mo <sup>o</sup> Mon <sup>o</sup>
Specificity	CD3-ε Polyclonal Antibody detects endogenous levels of CD3-ε protein.
Immunogen Description	Synthesized peptide derived from the Internal region of human CD3-ε.
Target Name	CD3-ε
Other Names	CD3E; T3E; T-cell surface glycoprotein CD3 epsilon chain; T-cell surface antigen T3/Leu-4 epsilon chain; CD3e
Accession No.	Swiss-Prot: P07766NCBI Gene ID: 916
SDS-PAGE MW	23kd
Concentration	1mg/ml
Formulation	Liquid in PBS containing 50% glycerol, 0.5% BSA and 0.02% sodium azide.
Storage	Store at -20°C/1 year

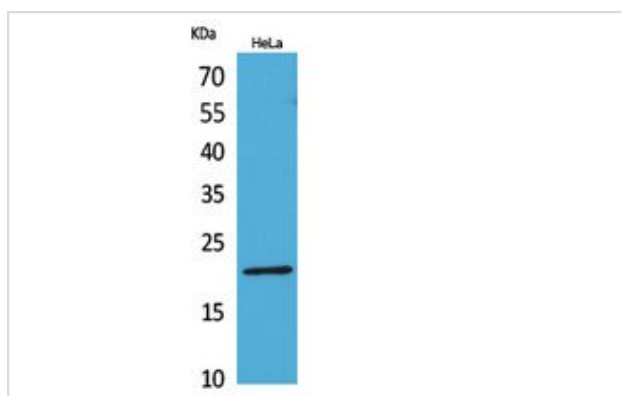
## Application Details

Western Blot: 1/500 - 1/2000.

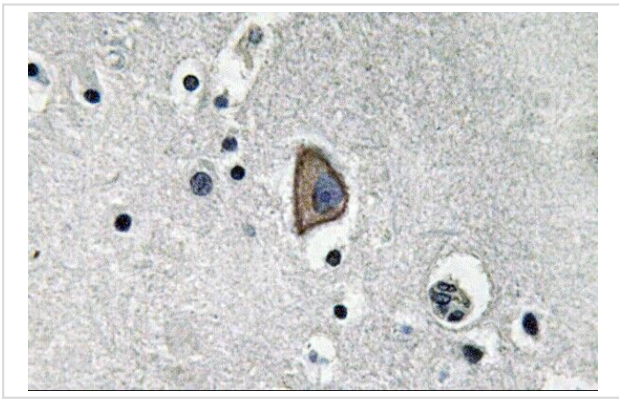
ELISA: 1/20000. IHC 1:100 - 1:300<sup>o</sup> IF 1:50-200

Not yet tested in other applications.

## Images



Western Blot analysis of HeLa cells using CD3-ε Polyclonal Antibody.



Immunohistochemistry analysis of CD3-ε antibody in paraffin-embedded human brain tissue.

---

Note: This product is for in vitro research use only and is not intended for use in humans or animals.