

## VEGF-B Polyclonal Antibody

Catalog No: #41857



Package Size: #41857-1 50ul #41857-2 100ul

Orders: [order@signalwayantibody.com](mailto:order@signalwayantibody.com)Support: [tech@signalwayantibody.com](mailto:tech@signalwayantibody.com)

## Description

Product Name	VEGF-B Polyclonal Antibody
Host Species	Rabbit
Clonality	Polyclonal
Purification	The antibody was affinity-purified from rabbit antiserum by affinity-chromatography using epitope-specific immunogen.
Applications	WB ELISA
Species Reactivity	Hu Ms Rt
Specificity	VEGF-B Polyclonal Antibody detects endogenous levels of VEGF-B protein.
Immunogen Type	peptide
Immunogen Description	Synthesized peptide derived from the Internal region of human VEGF-B.
Target Name	VEGF-B
Other Names	VEGFB; VRF; Vascular endothelial growth factor B; VEGF-B; VEGF-related factor; VRF
Accession No.	Swiss-Prot: P49765NCBI Gene ID: 7423
SDS-PAGE MW	22kd
Concentration	1mg/ml
Formulation	Liquid in PBS containing 50% glycerol, 0.5% BSA and 0.02% sodium azide.
Storage	Store at -20°C/1 year

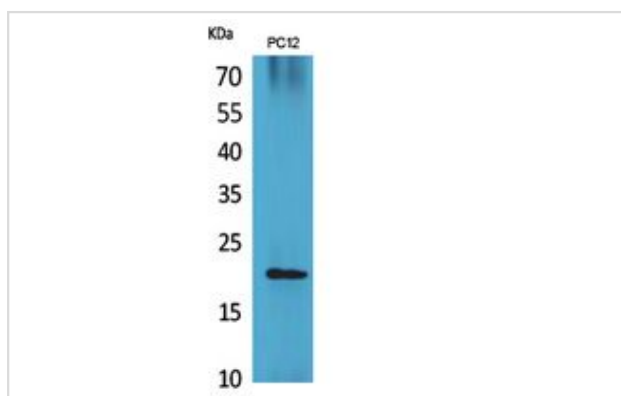
## Application Details

Western Blot: 1/500 - 1/2000.

ELISA: 1/20000.

Not yet tested in other applications.

## Images



Western Blot analysis of PC12 cells using VEGF-B Polyclonal Antibody.

---

Note: This product is for in vitro research use only and is not intended for use in humans or animals.