

C4a/b Polyclonal Antibody

Catalog No: #41908



Package Size: #41908-1 50ul #41908-2 100ul

Orders: order@signalwayantibody.com

Support: tech@signalwayantibody.com

Description

Product Name	C4a/b Polyclonal Antibody
Host Species	Rabbit
Clonality	Polyclonal
Purification	The antibody was affinity-purified from rabbit antiserum by affinity-chromatography using epitope-specific immunogen.
Applications	WB ELISA IHC IF
Species Reactivity	Human;Mouse;Rat
Specificity	C4a/b Polyclonal Antibody detects endogenous levels of C4a/b protein.
Immunogen Description	Synthesized peptide derived from the Internal region of human C4a/b.
Target Name	C4a/b
Other Names	C4A; CO4; CPAMD2; Complement C4-A; Acidic complement C4; C3 and PZP-like alpha-2-macroglobulin domain-containing protein 2; C4B; CO4; CPAMD3; Complement C4-B; Basic complement C4; C3 and PZP-like alpha-2-macroglobulin domain-containing protein 3
Accession No.	Swiss-Prot: P0C0L4/P0C0L5NCBI Gene ID: 720/721
SDS-PAGE MW	180kd
Concentration	1mg/ml
Formulation	Liquid in PBS containing 50% glycerol, 0.5% BSA and 0.02% sodium azide.
Storage	Store at -20°C/1 year

Application Details

Western Blot: 1/500 - 1/2000.

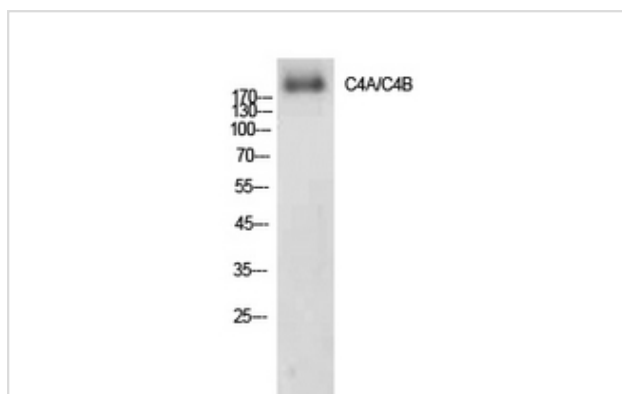
ELISA: 1/10000.

IHC: 1:100-1:300.

IF 1:50-200

Not yet tested in other applications.

Images



Western Blot analysis of AD293 cells using C4a/b Polyclonal Antibody.



Immunohistochemical analysis of paraffin-embedded human-liver, antibody was diluted at 1:100

Note: This product is for in vitro research use only and is not intended for use in humans or animals.