

## ICAM-2 Polyclonal Antibody

Catalog No: #41966



Package Size: #41966-1 50ul #41966-2 100ul

Orders: [order@signalwayantibody.com](mailto:order@signalwayantibody.com)Support: [tech@signalwayantibody.com](mailto:tech@signalwayantibody.com)

## Description

Product Name	ICAM-2 Polyclonal Antibody
Host Species	Rabbit
Clonality	Polyclonal
Purification	The antibody was affinity-purified from rabbit antiserum by affinity-chromatography using epitope-specific immunogen.
Applications	WB ELISA
Species Reactivity	Human;Mouse;Rat
Specificity	ICAM-2 Polyclonal Antibody detects endogenous levels of ICAM-2 protein.
Immunogen Description	Synthesized peptide derived from the Internal region of human ICAM-2.
Target Name	ICAM-2
Other Names	ICAM2; Intercellular adhesion molecule 2; ICAM-2; CD102
Accession No.	Swiss-Prot: P13598NCBI Gene ID: 3384
SDS-PAGE MW	30kd
Concentration	1mg/ml
Formulation	Liquid in PBS containing 50% glycerol, 0.5% BSA and 0.02% sodium azide.
Storage	Store at -20°C/1 year

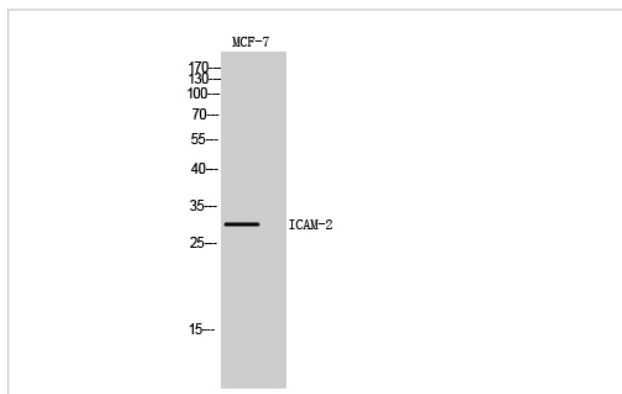
## Application Details

Western Blot: 1/500 - 1/2000.

ELISA: 1/10000.

Not yet tested in other applications.

## Images



Western Blot analysis of MCF-7 cells using ICAM-2 Polyclonal Antibody

---

Note: This product is for in vitro research use only and is not intended for use in humans or animals.